

Juvo Shower Commodes

Always Innovating



The enabling power
of applied knowledge



JUVO Shower Commode





INDEX

Standard Mobile Shower Commodes

1000 Series - Attendant Propelled - Sliding Footrest

Adult Care	6 - 7
Adult Select	8 - 9
Adult Bariatric	10 - 11
Adult Bariatric Plus	12 - 13

2000 Series - Attendant Propelled - Swing-away Footrest

Junior	16 - 17
Adult Care	18 - 19
Adult Select	20 - 21
Adult Height Adjustable	22 - 23
Adult Bariatric	24 - 25

3000 Series - Self-Propelled - Sliding Footrest

Adult Select	28 - 29
Adult Bariatric	30 - 31

4000 Series - Self-Propelled - Swing-away Footrest

Adult Select	34 - 35
Adult Height Adjustable	36 - 37
Adult Folding	38 - 39
Adult Bariatric	40 - 41

Specialised Mobile Shower Commodes

5000 Series - Tilt in Space

Adult Select	44 - 45
Adult Bariatric	46 - 47
Electric	48 - 49

Shower Commode Seat Options

52 - 53

Shower Commode Accessories

56 - 63

Materials & Warranty

64



JUVO Shower Commode 1000 Series





1000 SERIES

Attendant Propelled Sliding Footrest

The Juvo Care 1000 Series mobile shower commodes have been designed with the input of aged care and hospital professionals to deliver the ultimate in convenience and safety. This series features a non-slip sliding footrest, braking stainless steel castors and durable easy to clean stainless steel frame. This is in 7 seat widths and 8 models accommodating both adult and bariatric user requirements.



1000 SERIES

Adult Care

Features

- Assists transportation of the patient for showering and toileting
- Rear opening enables positioning over the toilet
- Durable 304 grade stainless steel frame, designed to withstand extensive wet area use
- Reinforced seat/back frame
- Deep front trough provide access for easy cleaning
- Selection of seamless PU padded seats & Pressure care seats (open or closed fronts)
- Removable seat using the Juvo registered design “klipps” system
- Flexible, anti bacterial, non woven back straps conform to the users shape for support and comfort
- Swing back independent armrests to assist in side transfer and patient access
- Open armrest design allows for the natural hip and thigh prominence, also eliminating ‘pinch point’ between armrest and seat
- Two position height adjustable armrests
- Rear axle brackets allow for fitment of optional self propelling kit (2/JH304)
- Sliding, non-slip, “comfort grip”, weight bearing footrest platform
- Plastic 125mm castors (2 braking)
- Stainless steel pan rack guides prevent spillage of pan contents
- Safe working load and serial number permanently etched in stainless plate for easy asset identification
- This product is tested and certified to Australian Standards AS/NZS 3973: 2009

Please Note: seats must be purchased separately

See pages 52 - 53 for seat options.

See pages 56 - 63 for accessories.

Specifications

Product Code	2/JH1046H
Seat Width	460mm
Width Between Arms	490mm
Overall Height	1020mm
Overall Width	540mm
Overall Depth	800mm
Backrest Height	340mm
Armrest Height - High	240mm
Armrest Height - Low	200mm
Seat to Heel	400mm
Anterior Seat Height	595mm
Posterior Seat Height	565mm
Toilet Bowl Clearance - Height	500mm
Toilet Bowl Clearance - Width	410mm
Toilet Bowl Clearance - Between Pan Carrier	365mm
Wall to Rear of Aperture	225mm
Unit Weight	12.5kg
Max User Weight	150kg
Warranty (months)	60 (12 on castors, fixings, seat straps & wheels)



Reinforced seat/back frame

Swing back independent
armrests to assist in side transfer
and patient access

Flexible, anti bacterial,
non woven back straps

Deep front trough provide
access for easy cleaning

Two position height
adjustable armrests

Rear axle brackets
allow fitment of optional
self propelling wheel kit

Selection of seamless
PU padded seats &
Pressure care seats

Sliding, non-slip,
"comfort grip", weight
bearing footrest
platform

Plastic 125mm
castors



1000 SERIES

Adult Select

Features

- Assists transportation of the patient for showering and toileting
- Rear opening enables positioning over the toilet
- Durable 304 grade stainless steel frame, designed to withstand extensive wet area use
- Reinforced seat/back frame
- Deep front trough provide access for easy cleaning
- Selection of seamless PU padded seats & Pressure care seats (open or closed fronts)
- Removable seat using the Juvo registered design "klipps" system
- Flexible, anti bacterial, non woven back straps conform to the users shape for support and comfort
- Swing back independent armrests to assist in side transfer and patient access
- Open armrest design allows for the natural hip and thigh prominence, also eliminating 'pinch point' between armrest and seat
- Two position height adjustable armrests
- Safety arms provide user security & safety
- Sliding, non-slip, "comfort grip", weight bearing footrest platform
- Stainless steel 125mm castors (4 braking)
- Stainless steel pan rack guides prevent spillage of pan contents
- Safe working load and serial number permanently etched in stainless plate for easy asset identification
- This product is tested and certified to Australian Standards AS/NZS 3973: 2009
- Available in 3 seat widths; 410, 460 and 510mm - See Bariatric models for more seat widths

Please Note: seats must be purchased separately
See pages 52 - 53 for seat options.
See pages 56 - 63 for accessories.

Specifications

Product Code	2/JH1041	2/JH1046	2/JH1051
Seat Width	410mm	460mm	510mm
Width Between Arms	440mm	490mm	540mm
Overall Height	1020mm	1020mm	1020mm
Overall Width	490mm	540mm	590mm
Overall Depth	800mm	800mm	850mm
Backrest Height	340mm	340mm	340mm
Armrest Height - High	240mm	240mm	240mm
Armrest Height - Low	200mm	200mm	200mm
Seat to Heel	400mm	400mm	400mm
Anterior Seat Height	595mm	595mm	595mm
Posterior Seat Height	565mm	565mm	565mm
Toilet Bowl Clearance - Height	500mm	500mm	500mm
Toilet Bowl Clearance - Width	360mm	410mm	460mm
Toilet Bowl Clearance - Between Pan Carrier	315mm	365mm	365mm
Wall to Rear of Aperture	225mm	225mm	225mm
Unit Weight	12.35 kg	12.8kg	13.5kg
Max User Weight	200kg	200kg	300kg
Warranty (months)	60 (12 on castors, fixings, seat straps & wheels)		



Reinforced seat/back frame

Swing back independent armrests to assist in side transfer and patient access

Flexible, anti bacterial, non woven back straps

Polyurethane arm pads provide user comfort

Safety arms provide user security & safety

Deep front trough provide access for easy cleaning

Two position height adjustable armrests

Selection of seamless PU padded seats & Pressure care seats

Sliding, non-slip, "comfort grip", weight bearing footrest platform

Stainless steel 125mm castors





1000 SERIES

Adult Bariatric

Features

- Assists transportation of bariatric patients for showering and toileting
- Rear opening enables positioning over the toilet
- Durable 304 grade reinforced stainless steel frame, designed to withstand extensive wet area use
- Reinforced seat/back frame designed to accommodate bariatric weight capacities
- Deep front trough provide access for easy cleaning
- Selection of seamless PU padded seats & Pressure care seats (open or closed fronts)
- Removable seat using the Juvo registered design "klipps" system
- Flexible, anti bacterial, non woven back straps conform to the users shape for support and comfort
- Swing back independent armrests to assist in side transfer and patient access
- Open armrest design allows for the natural hip and thigh prominence, also eliminating 'pinch point' between armrest and seat
- Two position height adjustable armrests
- Safety arms provide user security & safety
- Sliding, non-slip, "comfort grip", weight bearing footrest platform
- Stainless steel 125mm castors (4 braking)
- Stainless steel pan rack guides prevent spillage of pan contents
- Safe working load and serial number permanently etched in stainless plate for easy asset identification
- This product is tested and certified to Australian Standards AS/NZS 3973: 2009
- Available in 5 seat widths; 510, 560, 610, 660 and 710mm

Please Note: seats must be purchased separately
See pages 52 - 53 for seat options.
See pages 56 - 63 for accessories.

Specifications

Product Code	2/JH1056	2/JH1061	2/JH1066	2/JH1071
Seat Width	560mm	610mm	660mm	710mm
Width Between Arms	590mm	640mm	690mm	740mm
Overall Height	1020mm	1020mm	1020mm	1020mm
Overall Width	640mm	690mm	740mm	790mm
Overall Depth	850mm	850mm	850mm	850mm
Backrest Height	340mm	340mm	340mm	340mm
Armrest Height - High	240mm	240mm	240mm	240mm
Armrest Height - Low	200mm	200mm	200mm	200mm
Seat to Heel	400mm	400mm	400mm	400mm
Anterior Seat Height	595mm	595mm	595mm	595mm
Posterior Seat Height	565mm	565mm	565mm	565mm
Toilet Bowl Clearance - Height	500mm	500mm	500mm	500mm
Toilet Bowl Clearance - Width	510mm	560mm	610mm	660mm
Toilet Bowl Clearance - Between Pan Carrier	365mm	365mm	365mm	365mm
Wall to Rear of Aperture	225mm	225mm	225mm	225mm
Unit Weight	14.05kg	14.75kg	15.45kg	16.15kg
Max User Weight	300kg	300kg	300kg	400kg
Warranty (months)				





1000 SERIES

Adult Bariatric Plus

Features

- Assists transportation of bariatric patients of up to 400kg for showering and toileting
- Rear opening enables positioning over the toilet
- Durable 304 grade reinforced stainless steel frame, designed to withstand extensive wet area use
- Reinforced seat/back frame designed to accommodate bariatric weight capacities
- Deep front trough provide access for easy cleaning
- Selection of seamless PU padded seats & Pressure care seats (open or closed fronts)
- Removable seat using the Juvo registered design "klipps" system
- Flexible, anti bacterial, non woven back straps conform to the users shape for support and comfort
- Drop down independent armrests to assist in side transfer and patient access
- Armrest design allows for the natural hip and thigh prominence, also eliminating 'pinch point' between armrest and seat
- Multi-position height adjustable padded armrests
- Safety arms provide user security & safety
- Sliding, non-slip, "comfort grip", weight bearing footrest platform
- Stainless steel 125mm castors (4 braking)
- Stainless steel pan rack guides prevent spillage of pan contents
- Safe working load and serial number permanently etched in stainless plate for easy asset identification
- This product is tested and certified to Australian Standards AS/NZS 3973: 2009

Please Note: seats must be purchased separately
See pages 52 - 53 for seat options.
See pages 56 - 63 for accessories.

Specifications

Product Code	2/JH1066-1
Seat Width	660mm
Width Between Arms	660mm
Overall Height	1020mm
Overall Width	730mm
Overall Depth	850mm
Backrest Height	340mm
Armrest Height - High	240mm
Armrest Height - Low	0mm
Seat to Heel	400mm
Anterior Seat Height	595mm
Posterior Seat Height	565mm
Toilet Bowl Clearance - Height	500mm
Toilet Bowl Clearance - Width	610mm
Toilet Bowl Clearance - Between Pan Carrier	365mm
Wall to Rear of Aperture	225mm
Unit Weight	15.9kg
Max User Weight	400kg
Warranty (months)	60 (12 on castors, fixings, seat straps & wheels)





JUVO Shower Commode 2000 Series





2000 SERIES

Attendant Propelled Swing-away Footrest

The Juvo Care 2000 Series Mobile Shower Commodes are designed to provide added function and adjustability ensuring carer & user safety and support. This series features patented 'tear safe' swing-away leg rests, braking stainless steel castors, and height adjustability. Available in 7 seat widths, 9 models and user weight capacity up to 300kg, this series meets the needs of junior, adult and bariatric user.



2000 SERIES

Junior

Features

- Assists transportation, showering, and toileting of paediatric patients
- Rear opening enables positioning over the toilet
- Durable 304 grade stainless steel frame, designed to withstand extensive wet area use
- Reinforced seat/back frame
- Removable, depth and angle adjustable backrest allows for customised positioning and backrest options
- Deep front trough provide access for easy cleaning
- Selection of seamless PU padded seats & Pressure care seats (open or closed fronts)
- Removable seat using the Juvo registered design "klipps" system
- Flexible, anti bacterial, non woven back straps conform to the users shape for support and comfort
- Swing back independent armrests to assist in side transfer and patient access
- Open armrest design allows for the natural hip and thigh prominence, also eliminating 'pinch point' between armrest and seat
- Two position height and angle adjustable armrests
- Safety arms provide user security & safety
- Rear axle brackets allow for fitment of optional self propelling kit (2/JH304)
- Swing away, removable and height adjustable legrests with flip up footplates
- Patented "tearsafe" legrest design, prevents injury to users legs
- Stainless steel 125mm castors (2 braking)
- Stainless steel pan rack guides prevent spillage of pan contents
- Safe working load and serial number permanently etched in stainless plate for easy asset identification
- This product is tested and certified to Australian Standards AS/NZS 3973: 2009

Please Note: seats must be purchased separately
See pages 52 - 53 for seat options.
See pages 56 - 63 for accessories.

Specifications

Product Code	2/JH2036H
Seat Width x Depth (Adjustable)	360mm x 275 - 340mm
Width Between Arms	390mm
Overall Height	1020mm
Overall Width	440mm
Overall Depth	850mm
Backrest Height	340mm
Armrest Height - High	200mm
Armrest Height - Low	200mm
Seat to Heel	200mm - 340mm
Anterior Seat Height	595mm
Anterior Seat Height Modified	505mm
Posterior Seat Height	565mm
Posterior Seat Height Modified	475mm
Toilet Bowl Clearance - Height	500mm
Toilet Bowl Clearance - Width	410mm
Toilet Bowl Clearance - Between Pan Carrier	365mm
Wall to Rear of Aperture	325mm
Unit Weight	11.95kg
Max User Weight	175kg
Warranty (months)	60 (12 on castors, fixings, seat straps & wheels)





2000 SERIES

Adult Care

Features

- Assists transportation of the patient for showering and toileting
- Rear opening enables positioning over the toilet
- Durable 304 grade stainless steel frame, designed to withstand extensive wet area use
- Reinforced seat/back frame
- Deep front trough provide access for easy cleaning
- Selection of seamless PU padded seats & Pressure care seats (open or closed fronts)
- Removable seat using the Juvo registered design "klipps" system
- Flexible, anti bacterial, non woven back straps conform to the users shape for support and comfort
- Swing back independent armrests to assist in side transfer and patient access
- Open armrest design allows for the natural hip and thigh prominence, also eliminating 'pinch point' between armrest and seat
- Two position height adjustable armrests
- Rear axle brackets allow for fitment of optional self propelling kit (2/JH304)
- Swing away, removable and height adjustable legrests with flip up footplates
- Patented "tearsafe" legrest design, prevents injury to users legs
- Plastic 125mm castors (2 braking)
- Stainless steel pan rack guides prevent spillage of pan contents
- Safe working load and serial number permanently etched in stainless plate for easy asset identification
- This product is tested and certified to Australian Standards AS/NZS 3973: 2009

Please Note: seats must be purchased separately
See pages 52 - 53 for seat options.
See pages 56 - 63 for accessories.

Specifications

Product Code	2/JH2046H
Seat Width	460mm
Width Between Arms	490mm
Overall Height	1020mm
Overall Width	540mm
Overall Depth	850mm
Backrest Height	340mm
Armrest Height - High	240mm
Armrest Height - Low	200mm
Seat to Heel	410mm - 575mm
Anterior Seat Height	595mm
Anterior Seat Height Modified	505mm
Posterior Seat Height	565mm
Posterior Seat Height Modified	475mm
Toilet Bowl Clearance - Height	500mm
Toilet Bowl Clearance - Width	410mm
Toilet Bowl Clearance - Between Pan Carrier	365mm
Wall to Rear of Aperture	225mm
Unit Weight	12.8kg
Max User Weight	175kg
Warranty (months)	60 (12 on castors, fixings, seat straps & wheels)





2000 SERIES

Adult Select

Features

- Assists transportation of the patient for showering and toileting
- Rear opening enables positioning over the toilet
- Durable 304 grade stainless steel frame, designed to withstand extensive wet area use
- Reinforced seat/back frame
- Deep front trough provide access for easy cleaning
- Selection of seamless PU padded seats & Pressure care seats (open or closed fronts)
- Removable seat using the Juvo registered design "klipps" system
- Flexible, anti bacterial, non woven back straps conform to the users shape for support and comfort
- Swing back independent armrests to assist in side transfer and patient access
- Open armrest design allows for the natural hip and thigh prominence, also eliminating 'pinch point' between armrest and seat
- Two position height adjustable armrests
- Safety arms provide user security & safety
- Swing away, removable and height adjustable legrests with flip up footplates
- Patented "tearsafe" legrest design, prevents injury to users legs
- Stainless steel 125mm castors (4 braking)
- Stainless steel pan rack guides prevent spillage of pan contents
- Safe working load and serial number permanently etched in stainless plate for easy asset identification
- This product is tested and certified to Australian Standards AS/NZS 3973: 2009
- Available in 3 seat widths; 410, 460 and 510mm - See Bariatric models for more seat widths

Please Note: seats must be purchased separately
See pages 52 - 53 for seat options.
See pages 56 - 63 for accessories.

Specifications

Product Code	2/JH2041	2/JH2046	2/JH2051
Seat Width	410mm	460mm	510mm
Width Between Arms	440mm	490mm	540mm
Overall Height	1020mm	1020mm	1020mm
Overall Width	490mm	540mm	590mm
Overall Depth	850mm	850mm	900mm
Backrest Height	340mm	340mm	340mm
Armrest Height - High	240mm	240mm	240mm
Armrest Height - Low	200mm	200mm	200mm
Seat to Heel	320mm - 575mm	410mm - 575mm	410mm - 575mm
Anterior Seat Height	595mm	595mm	595mm
Anterior Seat Height Modified	505mm	505mm	505mm
Posterior Seat Height	565mm	565mm	565mm
Posterior Seat Height Modified	475mm	475mm	475mm
Toilet Bowl Clearance - Height	500mm	500mm	500mm
Toilet Bowl Clearance - Width	360mm	410mm	460mm
Toilet Bowl Clearance - Between Pan Carrier	315mm	365mm	365mm
Wall to Rear of Aperture	225mm	225mm	225mm
Unit Weight	12.78kg	13.1kg	13.45kg
Max User Weight	200kg	200kg	300kg
Warranty (months)	60 (12 on castors, fixings, seat straps & wheels)		





2000 SERIES

Adult Height Adjustable

Features

- Height adjustable commode, 4 positions, allows for improved patient care and positioning
- Rear opening enables positioning over the toilet
- Durable 304 grade stainless steel frame, designed to withstand extensive wet area use
- Reinforced seat/back frame
- Deep front trough provide access for easy cleaning
- Selection of seamless PU padded seats & Pressure care seats (open or closed fronts)
- Removable seat using the Juvo registered design "klipps" system
- Flexible, anti bacterial, non woven back straps conform to the users shape for support and comfort
- Swing back independent armrests to assist in side transfer and patient access
- Open armrest design allows for the natural hip and thigh prominence, also eliminating 'pinch point' between armrest and seat
- Two position height adjustable armrests
- Safety arms provide user security & safety
- Swing away, removable and height adjustable legrests with flip up footplates
- Patented "tearsafe" legrest design, prevents injury to users legs
- Stainless steel 125mm castors (4 braking)
- Stainless steel pan rack guides prevent spillage of pan contents
- Safe working load and serial number permanently etched in stainless plate for easy asset identification
- This product is tested and certified to Australian Standards AS/NZS 3973: 2009

Please Note: seats must be purchased separately
See pages 52 - 53 for seat options.
See pages 56 - 63 for accessories.

Specifications

Product Code	2/JH2041-1	2/JH2046-1	2/JH2051-1
Seat Width	410mm	460mm	510mm
Width Between Arms	440mm	490mm	540mm
Overall Height	930 - 1020mm	930 - 1020mm	930 - 1020mm
Overall Width	490mm	540mm	590mm
Overall Depth	850mm	850mm	900mm
Backrest Height	340mm	340mm	340mm
Armrest Height - High	240mm	240mm	240mm
Armrest Height - Low	200mm	200mm	200mm
Seat to Heel	320mm - 575mm	410mm - 575mm	410mm - 575mm
Anterior Seat Height	505mm - 595mm	515mm - 595mm	505mm - 595mm
Posterior Seat Height	475mm - 565mm	475mm - 565mm	475mm - 565mm
Toilet Bowl Clearance - Height	500mm	500mm	500mm
Toilet Bowl Clearance - Width	360mm	410mm	460mm
Toilet Bowl Clearance - Between Pan Carrier	315mm	365mm	365mm
Wall to Rear of Aperture	225mm	225mm	225mm
Unit Weight	12.78kg	13.8kg	13.45kg
Max User Weight	200kg	200kg	300kg
Warranty (months)	60 (12 on castors, fixings, seat straps & wheels)		





2000 SERIES

Adult Bariatric

Features

- Assists transportation of bariatric patients for showering and toileting
- Rear opening enables positioning over the toilet
- Durable 304 grade reinforced stainless steel frame, designed to withstand extensive wet area use
- Reinforced seat/back frame designed to accommodate bariatric weight capacities
- Deep front trough provide access for easy cleaning
- Selection of seamless PU padded seats & Pressure care seats (open or closed fronts)
- Removable seat using the Juvo registered design "klipps" system
- Flexible, anti bacterial, non woven back straps conform to the users shape for support and comfort
- Swing back independent armrests to assist in side transfer and patient access
- Open armrest design allows for the natural hip and thigh prominence, also eliminating 'pinch point' between armrest and seat
- Two position height adjustable armrests
- Safety arms provide user security & safety
- Swing away, removable and height adjustable legrests with flip up footplates
- Patented "tearsafe" legrest design, prevents injury to users legs
- Stainless steel 125mm castors (4 braking)
- Stainless steel pan rack guides prevent spillage of pan contents
- Safe working load and serial number permanently etched in stainless plate for easy asset identification
- This product is tested and certified to Australian Standards AS/NZS 3973: 2009
- Available in 4 seat widths; 510, 560, 610, and 660mm

Please Note: seats must be purchased separately
See pages 52 - 53 for seat options.
See pages 56 - 63 for accessories.

Specifications

Product Code	2/JH2051	2/JH2056	2/JH2061	2/JH2066
Seat Width	510mm	560mm	610mm	660mm
Width Between Arms	540mm	590mm	640mm	690mm
Overall Height	1020mm	1020mm	1020mm	1020mm
Overall Width	590mm	640mm	690mm	740mm
Overall Depth	900mm	900mm	900mm	900mm
Backrest Height	340mm	340mm	340mm	340mm
Armrest Height - High	240mm	240mm	240mm	240mm
Armrest Height - Low	200mm	200mm	200mm	200mm
Seat to Heel	410mm - 575mm	410mm - 575mm	410mm - 575mm	410mm - 575mm
Anterior Seat Height	595mm	595mm	595mm	595mm
Anterior Seat Height Modified	505mm	505mm	505mm	505mm
Posterior Seat Height	565mm	565mm	565mm	565mm
Posterior Seat Height Modified	475mm	475mm	475mm	475mm
Toilet Bowl Clearance - Height	500mm	500mm	500mm	500mm
Toilet Bowl Clearance - Width	460mm	510mm	560mm	610mm
Toilet Bowl Clearance - Between Pan Carrier	365mm	365mm	365mm	365mm
Wall to Rear of Aperture	225mm	225mm	225mm	225mm
Unit Weight	13.45kg	13.85kg	14kg	14.3kg
Max User Weight	300kg	300kg	300kg	300kg
Warranty (months)	60 (12 on castors, fixings, seat straps & wheels)			





JUVO Shower Commode 3000 Series





3000 SERIES

Self Propelled Sliding Footrest

.....

The Juvo Care 3000 Series Mobile Shower Commode provides an optimal solution for users requiring independence and ultimate stability. This series features a non-slip sliding footrest, 22" Self-propelling rear wheels and lengthened frame for excellent weight distribution. With 5 models available and user weight capacity from 200 – 300kg, these units are suitable for adult and bariatric requirements.





3000 SERIES

Adult Select

Features

- Assists transportation of the patient for showering and toileting
- Rear opening enables positioning over the toilet
- Durable 304 grade stainless steel frame, designed to withstand extensive wet area use
- Reinforced seat/back frame
- Removable backrest allows for different backrest options
- Open Frame design allows for left and right side cut-out seats without modification
- Frame design allows for left and right side cut-out seats without modification
- Deep front trough provide access for easy cleaning
- Selection of seamless PU padded seats & Pressure care seats (open or closed fronts)
- Removable seat using the Juvo registered design "klipps" system
- Flexible, anti bacterial, non woven back straps conform to the users shape for support and comfort
- Swing back independent armrests to assist in side transfer and patient access
- Open armrest design allows for the natural hip and thigh prominence, also eliminating 'pinch point' between armrest and seat
- Two position height adjustable armrests
- Safety arms provide user security & safety
- Sliding, non-slip, "comfort grip", weight bearing footrest platform
- Amputee setting on rear axle bracket improves stability
- Stainless steel 125mm castors (4 braking)
- Plastic, quick release, 560mm (22 in.) rear wheels are level with seat for easy transfers
- Push to lock brakes with extended handle
- Stainless steel pan rack guides prevent spillage of pan contents
- Safe working load and serial number permanently etched in stainless plate for easy asset identification
- This product is tested and certified to Australian Standards AS/NZS 3973: 2009
- Available in 2 seat widths; 460 and 510mm - See Bariatric models for more seat widths

Please Note: seats must be purchased separately
See pages 52 - 53 for seat options.
See pages 56 - 63 for accessories.

Specifications

Product Code	2/JH3046	2/JH3051
Seat Width	460mm	510mm
Width Between Arms	490mm	540mm
Overall Height	1020mm	1020mm
Overall Width	540mm	590mm
Overall Depth	950mm	1000mm
Backrest Height	340mm	340mm
Armrest Height - High	240mm	240mm
Armrest Height - Low	200mm	200mm
Seat to Heel	400mm	400mm
Anterior Seat Height	595mm	595mm
Posterior Seat Height	565mm	565mm
Toilet Bowl Clearance - Height	500mm	500mm
Toilet Bowl Clearance - Width	410mm	460mm
Toilet Bowl Clearance - Between Pan Carrier	365mm	365mm
Wall to Rear of Aperture	325mm	325mm
Unit Weight	18.6kg	19.55kg
Max User Weight	200kg	300kg
Warranty (months)	60 (12 on castors, fixings, seat straps & wheels)	





3000 SERIES

Adult Bariatric

Features

- Assists transportation of bariatric patients for showering and toileting
- Rear opening enables positioning over the toilet
- Durable 304 grade stainless steel frame, designed to withstand extensive wet area use
- Reinforced seat/back frame designed to accommodate bariatric weight capacities
- Removable backrest allows for different backrest options
- Open Frame design allows for left and right side cut-out seats without modification
- Frame design allows for left and right side cut-out seats without modification
- Deep front trough provide access for easy cleaning
- Selection of seamless PU padded seats & Pressure care seats (open or closed fronts)
- Removable seat using the Juvo registered design "klipps" system
- Flexible, anti bacterial, non woven back straps conform to the users shape for support and comfort
- Swing back independent armrests to assist in side transfer and patient access
- Open armrest design allows for the natural hip and thigh prominence, also eliminating 'pinch point' between armrest and seat
- Two position height adjustable armrests
- Safety arms provide user security & safety
- Sliding, non-slip, "comfort grip", weight bearing footrest platform
- Amputee setting on rear axle bracket improves stability
- Stainless steel 125mm castors (4 braking)
- Plastic, quick release, 560mm (22 in.) rear wheels are level with seat for easy transfers
- Push to lock brakes with extended handle
- Stainless steel pan rack guides prevent spillage of pan contents
- Safe working load and serial number permanently etched in stainless plate for easy asset identification
- This product is tested and certified to Australian Standards AS/NZS 3973: 2009
- Available in 4 seat widths; 510, 560, 610, and 660mm

Please Note: seats must be purchased separately
See pages 52 - 53 for seat options.
See pages 56 - 63 for accessories.

Specifications

Product Code	2/JH3051	2/JH3056	2/JH3061	2/JH3066
Seat Width	510mm	560mm	610mm	660mm
Width Between Arms	540mm	590mm	640mm	690mm
Overall Height	1020mm	1020mm	1020mm	1020mm
Overall Width	590mm	640mm	690mm	740mm
Overall Depth	1000mm	1000mm	1000mm	1000mm
Backrest Height	340mm	340mm	340mm	340mm
Armrest Height - High	240mm	240mm	240mm	240mm
Armrest Height - Low	200mm	200mm	200mm	200mm
Seat to Heel	400mm	400mm	400mm	400mm
Anterior Seat Height	595mm	595mm	595mm	595mm
Posterior Seat Height	565mm	565mm	565mm	565mm
Toilet Bowl Clearance - Height	500mm	500mm	500mm	500mm
Toilet Bowl Clearance - Width	460mm	510mm	560mm	610mm
Toilet Bowl Clearance - Between Pan Carrier	365mm	365mm	365mm	365mm
Wall to Rear of Aperture	325mm	325mm	325mm	325mm
Unit Weight	19.5kg	20.05kg	20.6kg	20.9kg
Max User Weight	300kg	300kg	300kg	300kg
Warranty (months)	60 (12 on castors, fixings, seat straps & wheels)			





JUVO Shower Commode 4000 Series





4000 SERIES

Self Propelled Swing-away Footrest

The Juvo Care 4000 Series is the ultimate shower commode for adjustability, function and support. The ability to choose from 8 models, 6 seat widths, fixed or folding frames, weight capacities, backrest, seating and leg rest options, ensures the user has ultimate support, independence and comfort. User Weight capacities range from 200 – 300kg, meeting the needs of adult and bariatric users.



4000 SERIES

Adult Select

Features

- Assists transportation of the patient for showering and toileting
- Rear opening enables positioning over the toilet
- Durable 304 grade stainless steel frame, designed to withstand extensive wet area use
- Reinforced seat/back frame
- Removable backrest allows for different backrest options
- Open Frame design allows for left and right side cut-out seats without modification
- Deep front trough provide access for easy cleaning
- Selection of seamless PU padded seats & Pressure care seats (open or closed fronts)
- Removable seat using the Juvo registered design "klipps" system
- Flexible, anti bacterial, non woven back straps conform to the users shape for support and comfort
- Swing back independent armrests to assist in side transfer and patient access
- Open armrest design allows for the natural hip and thigh prominence, also eliminating 'pinch point' between armrest and seat
- Two position height adjustable armrests
- Safety arms provide user security & safety
- Swing away, removable and height adjustable legrests with flip up footplates
- Patented "tearsafe" legrest design, prevents injury to users legs
- Height and Depth adjustable rear axle plate allows for 4 seat heights
- Amputee setting on rear axle bracket improves stability
- Stainless steel 125mm castors
- Plastic, quick release, 560mm (22 in.) rear wheels are level with seat for easy transfers
- Push to lock brakes with extended handle
- Stainless steel pan rack guides prevent spillage of pan contents
- Safe working load and serial number permanently etched in stainless plate for easy asset identification
- This product is tested and certified to Australian Standards AS/NZS 3973: 2009
- Available in 3 seat widths; 410, 460 and 510mm - See Bariatric models for more seat widths

Please Note: seats must be purchased separately
See pages 52 - 53 for seat options.
See pages 56 - 63 for accessories.

Specifications

Product Code	2/JH4041	2/JH4046	2/JH4051
Seat Width	410mm	460mm	510mm
Width Between Arms	440mm	490mm	540mm
Overall Height	1020mm	1020mm	1020mm
Overall Width	610mm	660mm	590mm
Overall Depth	950mm	1000mm	1050mm
Backrest Height	340mm	340mm	340mm
Armrest Height - High	240mm	240mm	240mm
Armrest Height - Low	200mm	200mm	200mm
Seat to Heel	320mm - 575mm	410mm - 575mm	410mm - 575mm
Anterior Seat Height	595mm	595mm	595mm
Anterior Seat Height Modified	505mm	505mm	505mm
Posterior Seat Height	565mm	565mm	565mm
Posterior Seat Height Modified	475mm	475mm	475mm
Toilet Bowl Clearance - Height	500mm	500mm	500mm
Toilet Bowl Clearance - Width	410mm	410mm	460mm
Toilet Bowl Clearance - Between Pan Carrier	315mm	365mm	365mm
Wall to Rear of Aperture	225mm	325mm	325mm
Unit Weight	19.25kg	19.25	19.5kg
Max User Weight	200kg	200kg	300kg
Warranty (months)	60 (12 on castors, fixings, seat straps & wheels)		





4000 SERIES

Adult Height Adjustable

Features

- Height adjustable commode, 4 positions, allows for improved patient care and positioning
- Rear opening enables positioning over the toilet
- Durable 304 grade stainless steel frame, designed to withstand extensive wet area use
- Reinforced seat/back frame
- Removable backrest allows for different backrest options
- Open frame design allows for left and right side cut-out seats without modification
- Frame design allows for left and right side cut-out seats without modification
- Deep front trough provide access for easy cleaning
- Selection of seamless PU padded seats & Pressure care seats (open or closed fronts)
- Removable seat using the Juvo registered design "klipps" system
- Flexible, anti bacterial, non woven back straps conform to the users shape for support and comfort
- Swing back independent armrests to assist in side transfer and patient access
- Open armrest design allows for the natural hip and thigh prominence, also eliminating 'pinch point' between armrest and seat
- Two position height adjustable armrests
- Safety arms provide user security & safety
- Swing away, removable and height adjustable legrests with flip up footplates
- Patented "tearsafe" legrest design, prevents injury to users legs
- Height and Depth adjustable rear axle plate allows for 4 seat heights
- Amputee setting on rear axle bracket improves stability
- Stainless steel 125mm castors
- Plastic, quick release, 560mm (22 in.) rear wheels are level with seat for easy transfers
- Push to lock brakes with extended handle
- Stainless steel pan rack guides prevent spillage of pan contents
- Safe working load and serial number permanently etched in stainless plate for easy asset identification
- This product is tested and certified to Australian Standards AS/NZS 3973: 2009

Please Note: seats must be purchased separately
See pages 52 - 53 for seat options.
See pages 56 - 63 for accessories.

Specifications

Product Code	2/JH4041-1	2/JH4046-1	2/JH4051-1
Seat Width	410mm	460mm	510mm
Width Between Arms	440mm	490mm	540mm
Overall Height	930 - 1020mm	930 - 1020mm	930 - 1020mm
Overall Width	610mm	540mm	510mm
Overall Depth	950mm	1000mm	1050mm
Backrest Height	340mm	340mm	340mm
Armrest Height - High	240mm	240mm	240mm
Armrest Height - Low	200mm	200mm	200mm
Seat to Heel	320mm - 575mm	410mm - 575mm	410mm - 575mm
Anterior Seat Height	505mm - 595mm	505mm - 595mm	505mm - 595mm
Posterior Seat Height	475mm - 565mm	475mm - 565mm	475mm - 565mm
Toilet Bowl Clearance - Height	500mm	500mm	500mm
Toilet Bowl Clearance - Width	410mm	410mm	460mm
Toilet Bowl Clearance - Between Pan Carrier	315mm	365mm	365mm
Wall to Rear of Aperture	225mm	325mm	325mm
Unit Weight	19.25	19.35	19.5
Max User Weight	200kg	200kg	300kg
Warranty (months)	60 (12 on castors, fixings, seat straps & wheels)		





4000 SERIES

Adult Folding

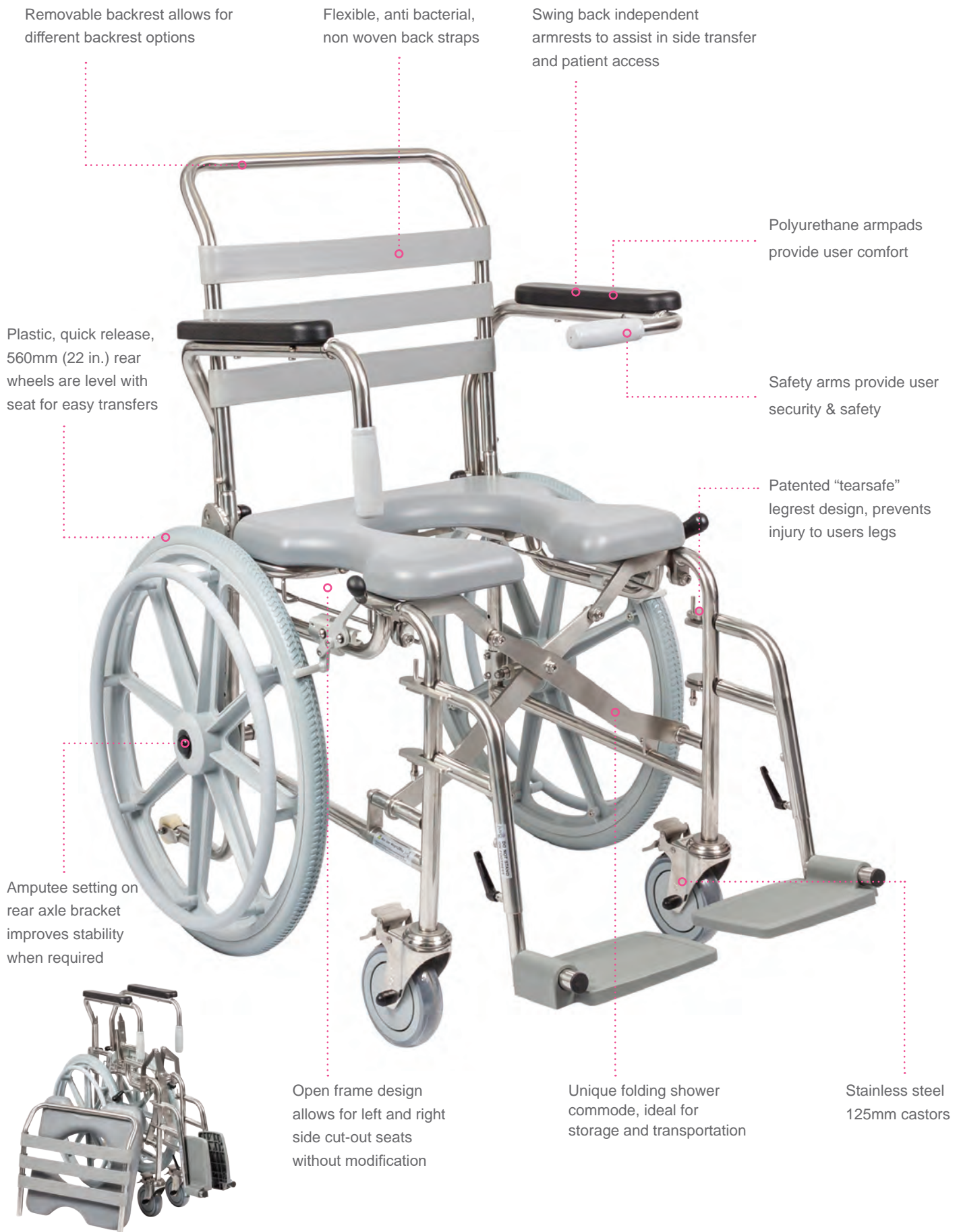
Features

- Unique folding shower commode, ideal for storage and transportation
- Easy to use, single action folding mechanism
- Rear opening enables positioning over the toilet
- Durable 304 grade stainless steel frame, designed to withstand extensive wet area use
- Reinforced seat/back frame
- Removable backrest allows for different backrest options
- Open frame design allows for left and right side cut-out seats without modification
- Frame design allows for left and right side cut-out seats without modification
- Deep front trough provide access for easy cleaning
- Selection of seamless PU padded seats & Pressure care seats (open or closed fronts)
- Removable seat using the Juvo registered design "klipps" system
- Flexible, anti bacterial, non woven back straps conform to the users shape for support and comfort
- Swing back independent armrests to assist in side transfer and patient access
- Open armrest design allows for the natural hip and thigh prominence, also eliminating 'pinch point' between armrest and seat
- Two position height adjustable armrests
- Safety arms provide user security & safety
- Swing away, removable and height adjustable legrests with flip up footplates
- Patented "tearsafe" legrest design, prevents injury to users legs
- Height and Depth adjustable rear axle plate allows for 4 seat heights
- Amputee setting on rear axle bracket improves stability
- Stainless steel 125mm castors
- Plastic, quick release, 560mm (22 in.) rear wheels are level with seat for easy transfers
- Push to lock brakes with extended handle
- Stainless steel pan rack guides prevent spillage of pan contents
- Safe working load and serial number permanently etched in stainless plate for easy asset identification
- This product is tested and certified to Australian Standards AS/NZS 3973: 2009

Please Note: seats must be purchased separately
See pages 52 - 53 for seat options.
See pages 56 - 63 for accessories.

Specifications

Product Code	2/JH4146
Seat Width	460mm
Width Between Arms	490mm
Overall Height	1020mm
Overall Width	5400mm
Overall Depth	1000mm
Backrest Height	340mm
Armrest Height - High	240mm
Armrest Height - Low	200mm
Seat to Heel	410mm - 575mm
Anterior Seat Height	595mm
Anterior Seat Height Modified	505mm
Posterior Seat Height	565mm
Posterior Seat Height Modified	475mm
Toilet Bowl Clearance - Height	500mm
Toilet Bowl Clearance - Width	410mm
Toilet Bowl Clearance - Between Pan Carrier	365mm
Wall to Rear of Aperture	325mm
Unit Weight	19.80kh (includes seat)
Max User Weight	200kg
Warranty (months)	60 (12 on castors, fixings, seat straps & wheels)





4000 SERIES

Adult Bariatric

Features

- Assists transportation of bariatric patients for showering and toileting
- Rear opening enables positioning over the toilet
- Durable 304 grade stainless steel frame, designed to withstand extensive wet area use
- Reinforced seat/back frame designed to accommodate bariatric weight capacities
- Removable backrest allows for different backrest options
- Open frame design allows for left and right side cut-out seats without modification
- Frame design allows for left and right side cut-out seats without modification
- Deep front trough provide access for easy cleaning
- Selection of seamless PU padded seats & Pressure care seats (open or closed fronts)
- Removable seat using the Juvo registered design "klipps" system
- Flexible, anti bacterial, non woven back straps conform to the users shape for support and comfort
- Swing back independent armrests to assist in side transfer and patient access
- Open armrest design allows for the natural hip and thigh prominence, also eliminating 'pinch point' between armrest and seat
- Two position height adjustable armrests
- Safety arms provide user security & safety
- Swing away, removable and height adjustable legrests with flip up footplates
- Patented "tearsafe" legrest design, prevents injury to users legs
- Height and Depth adjustable rear axle plate allows for 4 seat heights
- Amputee setting on rear axle bracket improves stability
- Stainless steel 125mm castors
- Plastic, quick release, 560mm (22 in.) rear wheels are level with seat for easy transfers
- Push to lock brakes with extended handle
- Stainless steel pan rack guides prevent spillage of pan contents
- Safe working load and serial number permanently etched in stainless plate for easy asset identification
- This product is tested and certified to Australian Standards AS/NZS 3973: 2009
- Available in 4 seat widths; 510, 560, 610, and 660mm

Please Note: seats must be purchased separately
See pages 52 - 53 for seat options.
See pages 56 - 63 for accessories.

Specifications

Product Code	2/JH4051	2/JH4056	2/JH4061	2/JH4066
Seat Width	510mm	560mm	610mm	660mm
Width Between Arms	540mm	590mm	640mm	690mm
Overall Height	1020mm	1020mm	1020mm	1020mm
Overall Width	590mm	640mm	690mm	740mm
Overall Depth	1050mm	1050mm	1050mm	1050mm
Backrest Height	340mm	340mm	340mm	340mm
Armrest Height - High	240mm	240mm	240mm	240mm
Armrest Height - Low	200mm	200mm	200mm	200mm
Seat to Heel	410mm - 575mm	410mm - 575mm	410mm - 575mm	410mm - 575mm
Anterior Seat Height	595mm	595mm	595mm	595mm
Anterior Seat Height Modified	505mm	505mm	505mm	505mm
Posterior Seat Height	565mm	565mm	565mm	565mm
Posterior Seat Height Modified	475mm	475mm	475mm	475mm
Toilet Bowl Clearance - Height	500mm	500mm	500mm	500mm
Toilet Bowl Clearance - Width	460mm	510mm	560mm	610mm
Toilet Bowl Clearance - Between Pan Carrier	365mm	365mm	365mm	365mm
Wall to Rear of Aperture	325mm	325mm	325mm	325mm
Unit Weight	19.5kg	21.25kg	21.45	21.75
Max User Weight	300kg	300kg	300kg	300kg
Warranty (months)	60 (12 on castors, fixings, seat straps & wheels)			





JUVO Shower Commode 5000 Series





5000 SERIES

Attendant Propelled Tilt-in-Space

The Juvo Care 5000 Series Tilt in Space Mobile Shower Commode is height adjustable and has 43 degrees of infinite 'tilt in space' giving superior positioning capabilities, user comfort and care giver options. This series is available in both gas assisted and electric controlled tilt action models available with either a multi-adjustable contoured headrest or full-length backrest, giving excellent support options. Multiple sizes and 300kg max user weight capacity, ensures an optimal solution is available every time.



5000 SERIES

Adult Select Tilt in Space

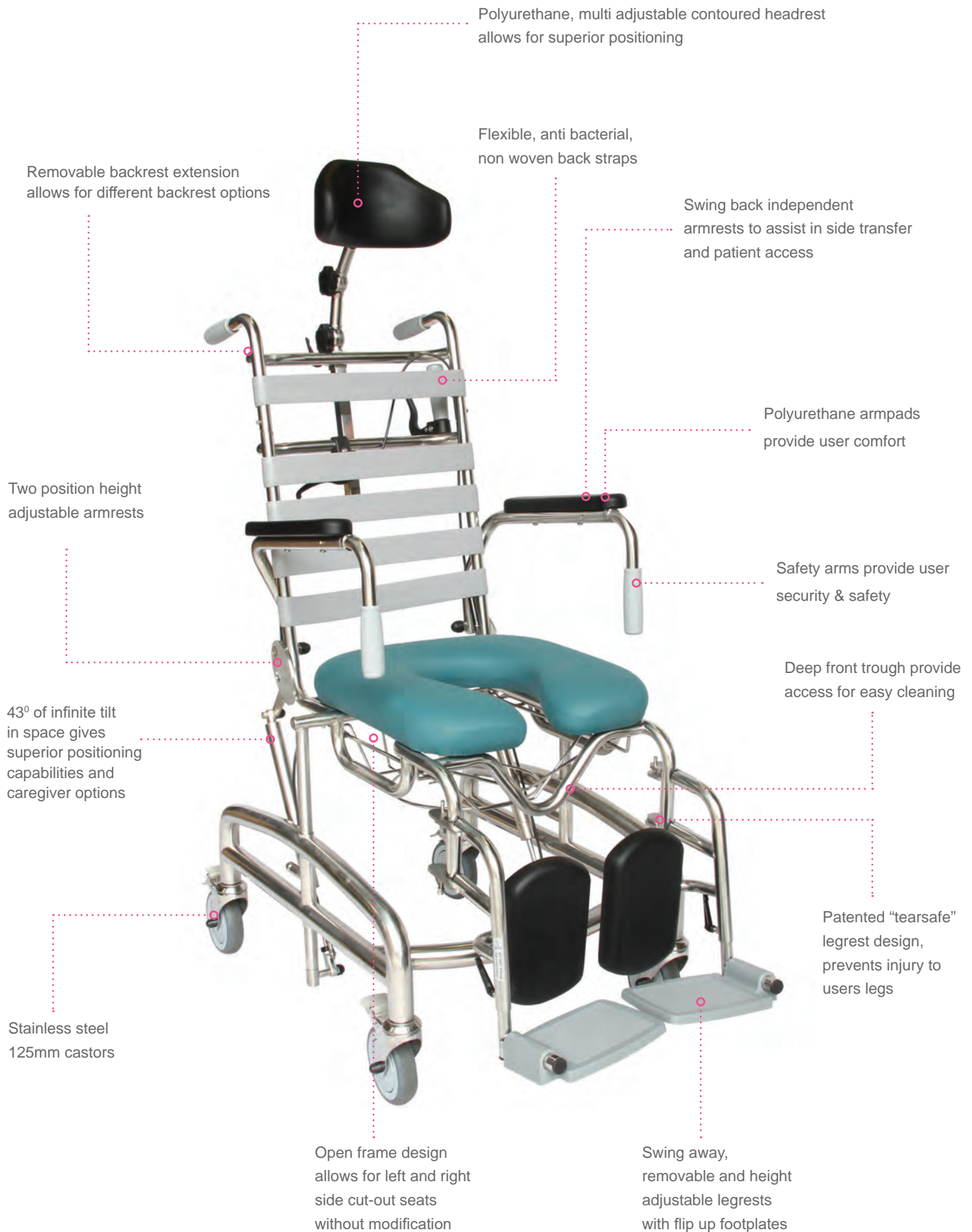
Features

- Assists transportation of the patient for showering and toileting
- Height adjustable commode, 7 positions, allows for improved patient care and positioning
- 43° of infinite tilt in space gives superior positioning capabilities and caregiver options
- Tilt release handle is removable for optimum carer positioning while tilting
- Rear opening enables positioning over the toilet
- Open frame design allows for left and right side cut-out seats without modification
- Durable 304 grade stainless steel frame, designed to withstand extensive wet area use
- Reinforced seat/back frame
- Removable backrest extension allows for different backrest options
- Frame design allows for left and right side cut-out seats without modification
- Deep front trough provide access for easy cleaning
- Selection of seamless PU padded seats & Pressure care seats (open or closed fronts)
- Removable seat using the Juvo registered design "klipps" system
- Flexible, anti bacterial, non woven back straps conform to the users shape for support and comfort
- Swing back independent armrests to assist in side transfer and patient access
- Open armrest design allows for the natural hip and thigh prominence, also eliminating 'pinch point' between armrest and seat
- Two position height adjustable armrests
- Safety arms provide user security & safety
- Swing away, removable and height adjustable legrests with flip up footplates
- Padded PU calf pads support legs when commode is in tilted position
- Patented "tearsafe" legrest design, prevents injury to users legs
- Stainless steel 125mm castors (4 braking)
- Stainless steel pan rack guides prevent spillage of pan contents
- Safe working load and serial number permanently etched in stainless plate for easy asset identification
- Available in 3 seat widths; 410, 460 and 510mm - See Bariatric models for more seat widths

Please Note: seats must be purchased separately
See pages 52 - 53 for seat options.
See pages 56 - 63 for accessories.

Specifications

Product Code	2/JH5041	2/JH5046	2/JH5051
Seat Width	510mm	460mm	510mm
Width Between Arms	540mm	490mm	540mm
Overall Height	1400-1530mm	1400-1530mm	1400-1530mm
Overall Width	540mm	540mm	610mm
Overall Depth	970-1500mm	970-1500mm	970-1500mm
Backrest Height	800mm	800mm	800mm
Armrest Height - High	240mm	240mm	240mm
Armrest Height - Low	200mm	200mm	200mm
Seat to Heel	410mm - 575mm	410mm - 575mm	410mm - 575mm
Anterior Seat Height - 6 settings at 26mm increments	510mm - 640mm	510mm - 660mm	510mm - 660mm
Posterior Seat Height - 6 settings at 26mm increments	520mm - 650mm	520mm - 650mm	520mm - 650mm
Toilet Bowl Clearance - Height	420 - 550mm	420 - 550mm	420 - 550mm
Toilet Bowl Clearance - Width	360mm	410mm	460mm
Toilet Bowl Clearance - Between Pan Carrier	315mm	365mm	365mm
Wall to Rear of Aperture	315mm	315mm	315mm
Seat Tilt Angle	-5° to 38°	-5° to 38°	-5° to 38°
Unit Weight	24.9kg	24.5kg	24.9kg
Max User Weight	300kg	200kg	300kg
Warranty (months)	60 (12 on castors, fixings, seat straps & wheels)		





5000 SERIES

Adult Bariatric Tilt in Space

Features

- Assists transportation of bariatric patient for showering and toileting
- Height adjustable commode, 7 positions, allows for improved patient care and positioning
- 43 degrees of infinite tilt in space gives superior positioning capabilities and caregiver options
- Tilt release handle is removable for optimum carer positioning while tilting
- Rear opening enables positioning over the toilet
- Open frame design allows for left and right side cut-out seats without modification
- Durable 304 grade stainless steel frame, designed to withstand extensive wet area use
- Reinforced seat/back frame
- Removable backrest extension allows for different backrest options
- Frame design allows for left and right side cut-out seats without modification
- Deep front trough provide access for easy cleaning
- Selection of seamless PU padded seats & Pressure care seats (open or closed fronts)
- Removable seat using the Juvo registered design "klipps" system
- Flexible, anti bacterial, non woven back straps conform to the users shape for support and comfort
- Swing back independent armrests to assist in side transfer and patient access
- Open armrest design allows for the natural hip and thigh prominence, also eliminating 'pinch point' between armrest and seat
- Two position height adjustable armrests
- Safety arms provide user security & safety
- Swing away, removable and height adjustable legrests with flip up footplates
- Padded PU calf pads support legs when commode is in tilted position
- Patented "tearsafe" legrest design, prevents injury to users legs
- Stainless steel 125mm castors (4 braking)
- Stainless steel pan rack guides prevent spillage of pan contents
- Safe working load and serial number permanently etched in stainless plate for easy asset identification
- Available in 4 seat widths; 510, 560, 610 and 660mm

Please Note: seats must be purchased separately
See pages 52 - 53 for seat options.
See pages 56 - 63 for accessories.

Specifications

Product Code	2/JH5051	2/JH5056	2/JH5061
Seat Width	510mm	560mm	610mm
Width Between Arms	540mm	590mm	640mm
Overall Height	1400-1530mm	1400-1530mm	1400-1530mm
Overall Width	610mm	660mm	610mm
Overall Depth	970-1500mm	970 - 1500mm	435mm
Backrest Height	800mm	800mm	800mm
Armrest Height - High	240mm	240mm	240mm
Armrest Height - Low	200mm	200mm	200mm
Seat to Heel	410 - 575mm	410 - 575mm	410 - 575mm
Anterior Seat Height - 6 settings at 26mm increments	510 - 640mm	510 - 640mm	510 - 640mm
Posterior Seat Height - 6 settings at 26mm increments	520 - 650mm	520 - 650mm	520 - 650mm
Toilet Bowl Clearance - Height	420-550mm	420 - 550mm	420-550mm
Toilet Bowl Clearance - Width	460mm	510mm	510mm
Toilet Bowl Clearance - Between Pan Carrier	365mm	365mm	365mm
Wall to Rear of Aperture	315mm	315mm	315mm
Seat Tilt Angle	-5° to 38°	-5° to 38°	-5° to 38°
Unit Weight	24.9kg	24.9kg	24.9kg
Max User Weight	300kg	300kg	300kg
Warranty (months)	60 (12 on castors, fixings, seat straps & wheels)		





5000 SERIES

Adult Electric Tilt in Space

Features

- Assists transportation of the patient for showering and toileting
- Height adjustable commode, 7 positions, allows for improved patient care and positioning
- 43 degrees of infinite tilt in space gives superior positioning capabilities and caregiver options
- Battery powered tilting mechanism for smooth and easy change of seat angle.
- Electric tilt allows for a more controlled lowering of bariatric patients
- Rear opening enables positioning over the toilet
- Durable 304 grade stainless steel frame, designed to withstand extensive wet area use
- Reinforced seat/back frame
- Removable backrest extension allows for different backrest options
- Frame design allows for left and right side cut-out seats without modification
- Deep front trough provide access for easy cleaning
- Selection of seamless PU padded seats & Pressure care seats (open or closed fronts)
- Removable seat using the Juvo registered design "klipps" system
- Flexible, anti bacterial, non woven back straps conform to the users shape for support and comfort
- Swing back independent armrests to assist in side transfer and patient access
- Open armrest design allows for the natural hip and thigh prominence, also eliminating 'pinch point' between armrest and seat
- Two position height adjustable armrests
- Safety arms provide user security & safety
- Swing away, removable and height adjustable legrests with flip up footplates
- Padded PU calf pads support legs when commode is in tilted position
- Patented "tearsafe" legrest design, prevents injury to users legs
- Stainless steel 125mm castors (4 braking)
- Stainless steel pan rack guides prevent spillage of pan contents
- Safe working load and serial number permanently etched in stainless plate for easy asset identification

Please Note: seats must be purchased separately
See pages 52 - 53 for seat options.
See pages 56 - 63 for accessories.

Specifications

Product Code	2/JH5051E	2/JH5056E	2/JH5061E
Seat Width	510mm	560mm	610mm
Width Between Arms	540mm	590mm	640mm
Overall Height	1400-1530mm	1400-1530mm	1400-1530mm
Overall Width	610mm	660mm	610mm
Overall Depth	970 - 1500mm	970 - 1500mm	970 - 1500mm
Backrest Height	800mm	800mm	800mm
Armrest Height - High	240mm	240mm	240mm
Armrest Height - Low	200mm	200mm	200mm
Seat to Heel	410 - 575mm	410 - 575mm	410 - 575mm
Anterior Seat Height - 6 settings at 26mm increments	510 - 640mm	510 - 640mm	510 - 640mm
Posterior Seat Height - 6 settings at 26mm increments	520 - 650mm	520 - 650mm	520 - 650mm
Toilet Bowl Clearance - Height	420 - 550mm	420 - 550mm	420 - 550mm
Toilet Bowl Clearance - Width	460mm	510mm	510mm
Toilet Bowl Clearance - Between Pan Carrier	365mm	365mm	365mm
Wall to Rear of Aperture	315mm	315mm	315mm
Seat Tilt Angle	-5° to 38°	-5° to 38°	-5° to 38°
Unit Weight	24.9kg	24.9kg	24.9kg
Max User Weight	300kg	300kg	300kg
Warranty (months)	60 (12 on castors, fixings, seat straps & wheels)		







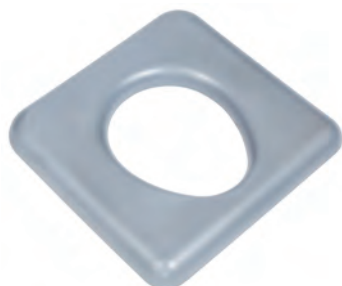
SEAT OPTIONS



Polyurethane Standard Seats

- Seamless construction prevents water ingress
- Resistance to Water, mould, mildew and fungus assists in infection control
- Antibacterial plastic insert ensures strength and longevity

Closed Front



Open Front



Open Front with Side Indent

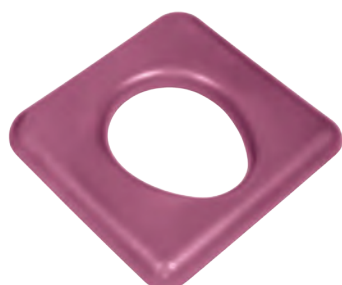


Polyurethane Standard Seats - Aperture Size: 215mm W x 260mm D								
	360mm (14in.)	410mm (16in.)	460mm (18in.)	510mm (20in.)	560mm (22in.)	610mm (24in.)	660mm (26in.)	710mm (28in.)
Closed Front		2/JH273	2/JH275					
Open Front		2/JH274	2/JH276	2/JH278	2/JH280	2/JH282	2/JH284	2/JH286
Open Front with Side Indents			2/JH290					

Polyurethane Impress™ Seats

- Seamless construction prevents water ingress
- Resistance to Water, mould, mildew and fungus assists in infection control
- Antibacterial plastic insert ensures strength and longevity
- Patented pressure management design, provides excellent pressure care

Closed Front



Open Front

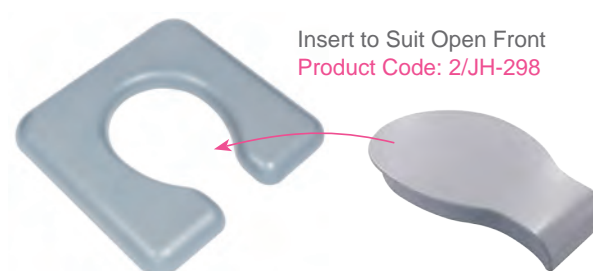
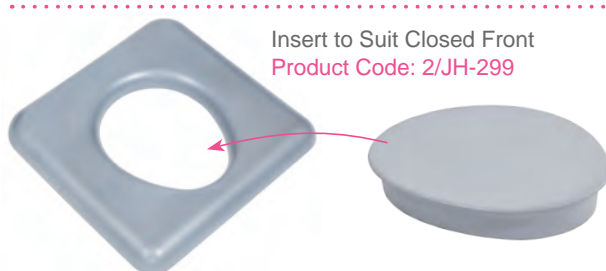


Open with Side Indent



Polyurethane Impress™ Seats - Aperture Size: 215mm W x 260mm D								
	360mm (14in.)	410mm (16in.)	460mm (18in.)	510mm (20in.)	560mm (22in.)	610mm (24in.)	660mm (26in.)	710mm (28in.)
Closed Front			2/JH275-PC					
Open Front			2/JH276-PC					
Open Front with Side Indents			2/JH290-PC					

Polyurethane Seat Inserts





Unisoft™ Pressure Care Seats

- High quality hand-made construction
- Structured foam and multi-stretch fabric provides excellent pressure care
- Polyurethane, water resistant & antibacterial fabric assists in infection control
- Marine-grade timber insert ensures strength and longevity
- Multiple sizes and designs allows for personalised comfort & hygiene care

Standard Aperture

Closed Front

Open Front

Open Front Left Indent

Open Front Right Indent

Left Opening

Right Opening



UniSoft™ Pressure Care Seats - Standard Aperture - Aperture Size: 190mm W x 230mm D

	360mm (14in.)	410mm (16in.)	460mm (18in.)	510mm (20in.)	560mm (22in.)	610mm (24in.)	660mm (26in.)	710mm (28in.)
Closed Front	2699	2700	2701	2702	2704	2705	2706	2707
Open Front	2709	2710	2711	2712	2714	2715	2716	2717
Open Front, with Left Indent		2730	2731	2732	2734	2735	2736	2737
Open Front, with Right Indent		2750	2751	2752	2754	2755	2756	2757
Left Opening		2760	2761	2762	2764	2765	2766	2767
Right Opening		2770	2771	2772	2774	2775	2776	2777

Narrow Aperture

Closed Front

Open Front

Open Front Left Indent

Open Front Right Indent

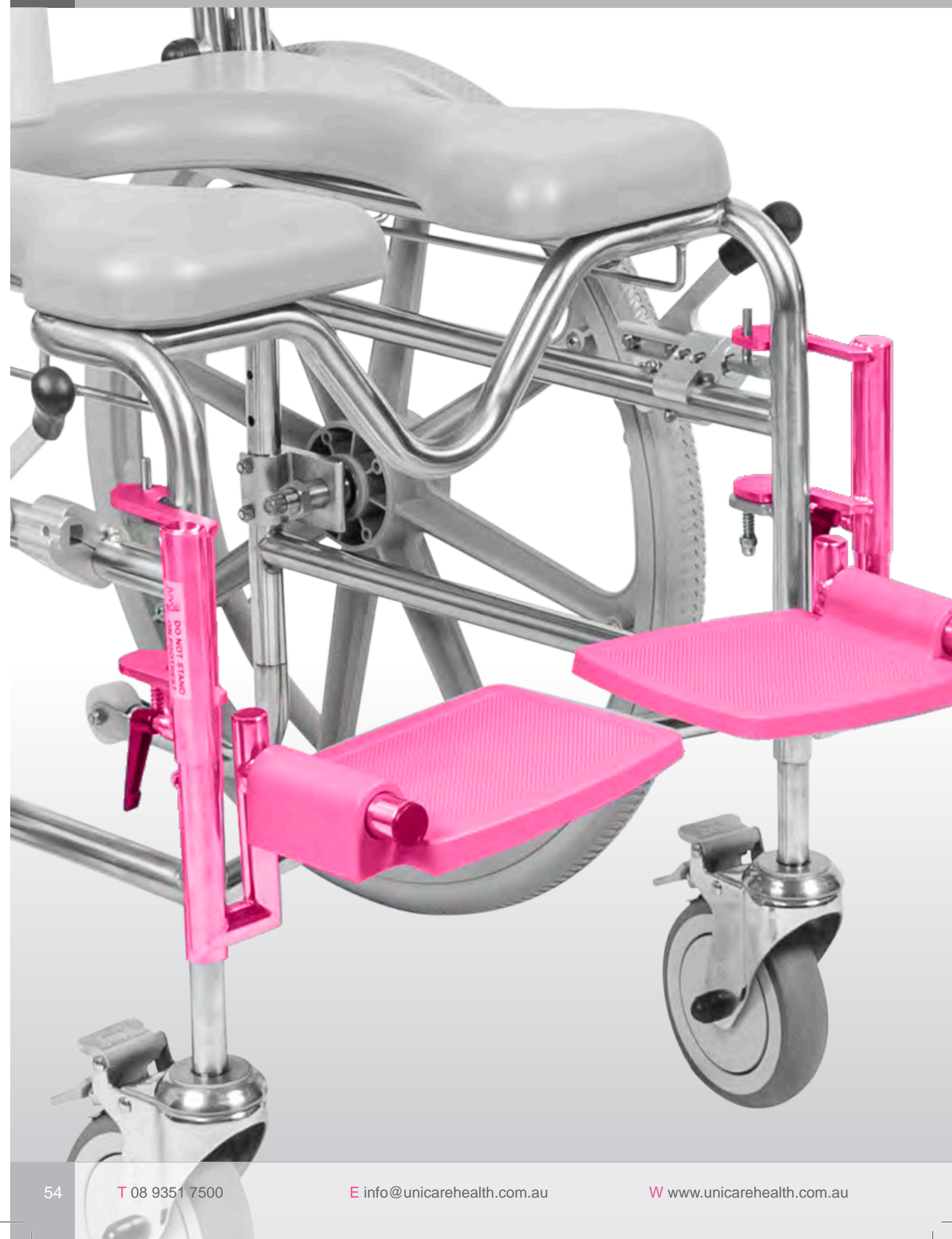
Left Opening

Right Opening



UniSoft™ Pressure Care Seats - Narrow Aperture - Aperture Size: 150mm W x 190mm D

	360mm (14in.)	410mm (16in.)	460mm (18in.)	510mm (20in.)	560mm (22in.)	610mm (24in.)	660mm (26in.)	710mm (28in.)
Closed Front		2800	2801	2802	2804	2805	2806	2807
Open Front		2810	2811	2812	2814	2815	2816	2817
Open Front, with Left Indent		2830	2831	2832	2834	2855	2836	2837
Open Front, with Right Indent		2850	2851	2852	2854	2855	2856	2857
Left Opening		2860	2861	2862	2864	2865	2866	2867
Right Opening		2870	2871	2872	2874	2875	2876	2877





ACCESSORIES



Armrests

Padded Armrest

Product Code: 2/JH100
Pair, fixings included



Arm Trough

Product Code: 2/JH102
Each, fixings included



Waterfall PU Armrest

Product Code: 2/JH103
Pair, fixings included



Arm Trough

Product Code: 2/JH503EXT
Pair



Specifications

Product Code
2/JH100 2/JH101

	2/JH100	2/JH101
Width	50mm	40mm

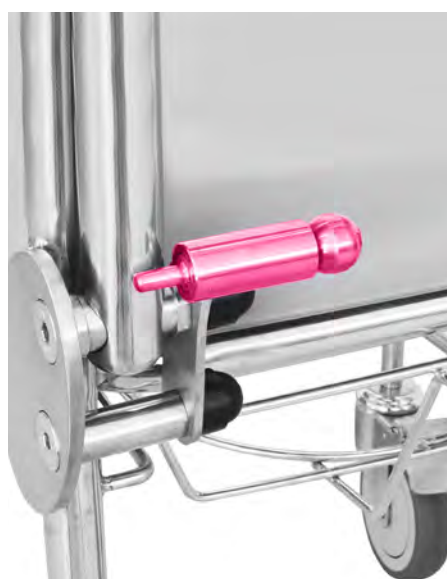
Transfer Bar Safety Arm

Product Code: 2/JH503TB
Pair



Lock Down Arm Kit

Product Code: 2/JH305
Pair, left & right.



Slip-on Lock Down Arm Kit

Product Code: 2/JH315
Pair, left & right, no fixing required





Backrests

Short back style with headrest bracket

Tilt-in-space
1 strap high



Angle adjustable backrest — 3 strap

Self propelled
340mm high to top strap



Angle adjustable backrest — 4 strap

Self propelled
415mm high to top strap



Wheelchair style backrest — 3 strap

Self propelled & tilt-in-space
340mm high to top strap



Width, mm	Product Code			
410	2/JH121-41	2/JH123-41	2/JH123-41-4	2/JH124-41
460	2/JH121-46	2/JH123-46	2/JH123-46-4	2/JH124-46
510	2/JH121-51	2/JH123-51	2/JH123-51-4	2/JH124-51
560	—	2/JH123-56	2/JH123-56-4	2/JH124-56
610	2/JH121-61	2/JH123-61	2/JH123-61-4	2/JH124-61
660	—	2/JH123-66	2/JH123-66-4	2/JH124-66

Wheelchair style backrest - 4 strap

Self propelled & tilt-in-space
415mm high to top strap



Backrest extension - 4 strap

Self propelled & tilt-in-space
415mm high to top strap



Backrest extension - 5 strap

Self propelled & tilt-in-space
490mm high to top strap



Backrest extension - 6 strap

Self propelled & tilt-in-space
570mm high to top strap



Width, mm	Product Code			
410	2/JH124-41-4	2/JH126-41	2/JH127-41	2/JH128-41
460	2/JH124-46-4	2/JH126-46	2/JH127-46	2/JH128-46
510	2/JH124-51-4	2/JH126-51	2/JH127-51	2/JH128-51
560	2/JH124-56-4	2/JH126-56	2/JH127-56	2/JH128-56
610	2/JH124-61-4	2/JH126-61	2/JH127-61	2/JH128-61
660	2/JH124-66-4	2/JH126-66	2/JH127-66	2/JH128-66



Pan & Bowl

Bowl with Lid & Handle

Product Code: 2/JH150

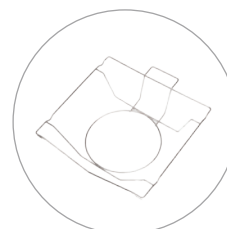
Grey



Pan/Bowl Carrier

Product Code: 2/JH103

Pair, fixings included



Product
Code

Seat Widths

2/JH151

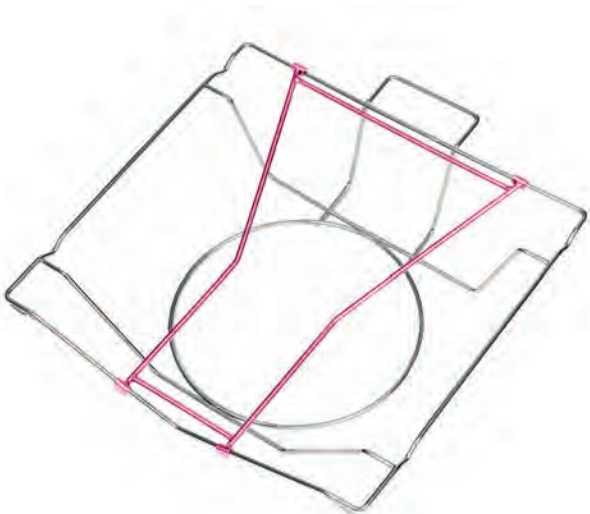
410

2/JH152

460, 510, 560, 610, 660

Additional Clip for Card- board Wires Pan Holder

Product Code: 2/JH154



Pan Carrier Rails

Product Code: 2/JH155





Footplates / Leg Options

One piece footplate

For swing-away models



Seat width, mm	Product Code
410	2/JH218-41
460	2/JH218-46
510	2/JH218-51
560	2/JH218-56
610	2/JH218-61
660	2/JH218-66
710	2/JH218-71

Vertical legrest

For paediatric models



Position	Product Code
Left	2/JH219
Right	2/JH220

Angle adjustable footrest

Legrest lower only



Position	Product Code
Left	2/JH221
Right	2/JH222

Elevating legrest



Position	Product Code
Left	2/JH225
Right	2/JH226

Stump support



Position	Product Code
Left	2/JH227
Right	2/JH228

Leg extension

Product Code: 2/JH229

Fits Left or right side, sliding or swing away models





Headrest

Contoured headrest

2/JH200

Adjustable with fixing clamp



Small headrest alternative

2/JH201

PU part only



Castor Extensions - Bolt On

2 x castor extension 175mm rear

2/JH224

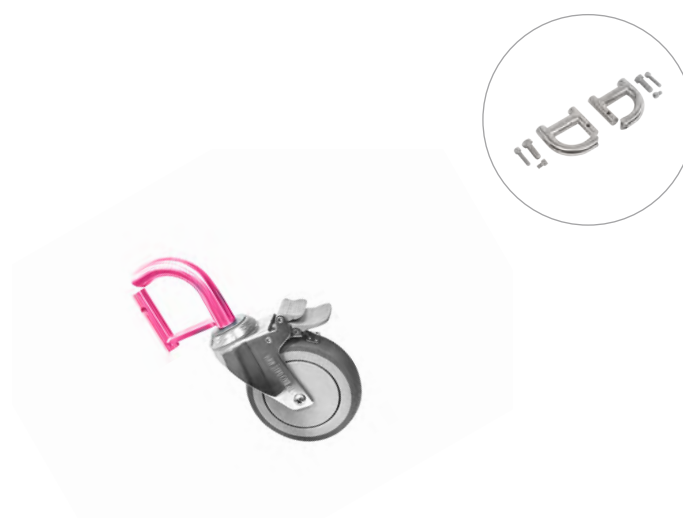
Including 6 bolts, excluding castor



2 x castor extension 75mm front

2/JH223

Excluding castor





Body Support

Chest/ pelvic strap
2/JH250
adjustable



Thoracic support
Swing-away left & right
including clamp



Position	Product Code
Left	2/JH252
Right	2/JH253

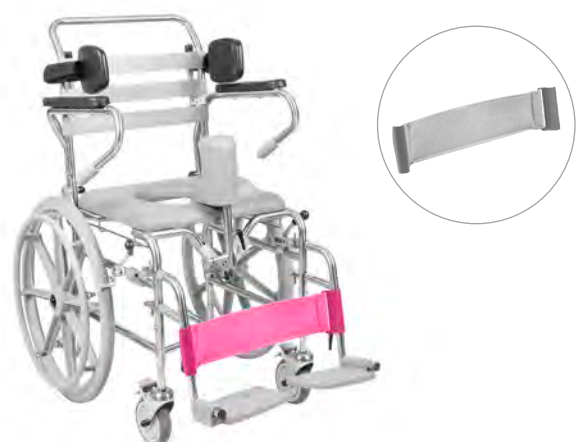
Dropdown pommel
2/JH254
height & depth adjustable



Thoracic support
2/JH255
cover only



Calf support strap



Width, mm	Product Code
410	2/JH256-41
460	2/JH256-46
510	2/JH256-51



Miscellaneous Items

Oxygen bottle carrier

2/JH302

Clamp included



Commode I.V. pole

2/JH301

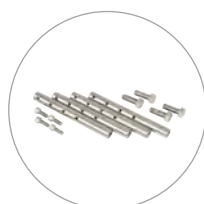
Adjustable height clamp included



Height adjustment kit

2/JH310

for swing-away models



Cast stainless steel angle adjustable joint

2/JH547

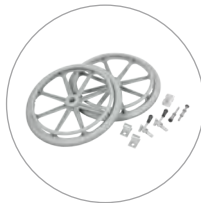




Self-propelling kit

2/JH304

22" wheels and push rim
Quick release axles
Axle brackets
Antitip bars including fixings



Suitcase for folding models

2/JH306



Accessories toolkit

2/JH307

Castor spinner, template for JH304, template for PU arm pad and arm trough install included





Materials & Warranty

Part	Warranty Period (Years)	Material	Grade	Finish
Frame	5	Stainless Steel	304	Mirror
Castors	1	Stainless Steel	304	Mirror
Fixings, Bolts, Nuts	1	Stainless Steel	304/316	Mirror
Spring & Button	1	Stainless Steel	304/316	Mirror
Seat	1	Polyurethane	Anti-Bacterial	Smooth
Backrest Straps	1	Polyurethane	Anti-Bacterial	Smooth
Hand Grips	1	Polyurethane	Anti-Bacterial	Non-Slip
Rear Wheels, Self Propelled	1	Moulded Plastic	Anti-Bacterial	Smooth
Armrests	1	Polyurethane	Anti-Bacterial	Smooth

[illegible]



Notes

66

This image shows a full page of blank, lined paper. It features approximately 20 evenly spaced horizontal blue lines across its entire width. The lines are thin and consistent in color, set against a plain white background. There are no margins, text, or other markings present on the page.



The enabling power
of applied knowledge

29 Alexandra Place

Bentley, WA 6102

PO Box 605, Bentley WA 6982

T 08 9351 7500 F 08 9350 5299

info@unicarehealth.com.au

www.unicarehealth.com.au

