

For a world without pressure injuries



Pressure Care Mattress Catalogue

 **care of sweden**
SUPPORTING LIFE



Supporting life

Over the years, we have developed a strong trust within care. Working alongside healthcare staff provides us with valuable knowledge and experience, both about pressure injuries and work place challenges. We want healthcare professionals to be able to use our pressure care products effectively and make intelligent decisions at work. Decisions that improve lives and make the work day easier.

Contact Unicare Health for Pressure Care education and product support.

 care of sweden
SUPPORTING LIFE



Care of Sweden

For a world without pressure injuries

Care of Sweden is a Swedish supplier of pressure care mattresses used as an aid in the prevention and management of pressure injuries.

Internationally renowned for its quality and functionality, Care of Sweden's pressure care mattress range is designed, developed, and manufactured in Sweden to the highest healthcare standards.

Together with our caregivers, our goal is to eliminate pressure injuries and provide pressure care solutions better than anyone else.

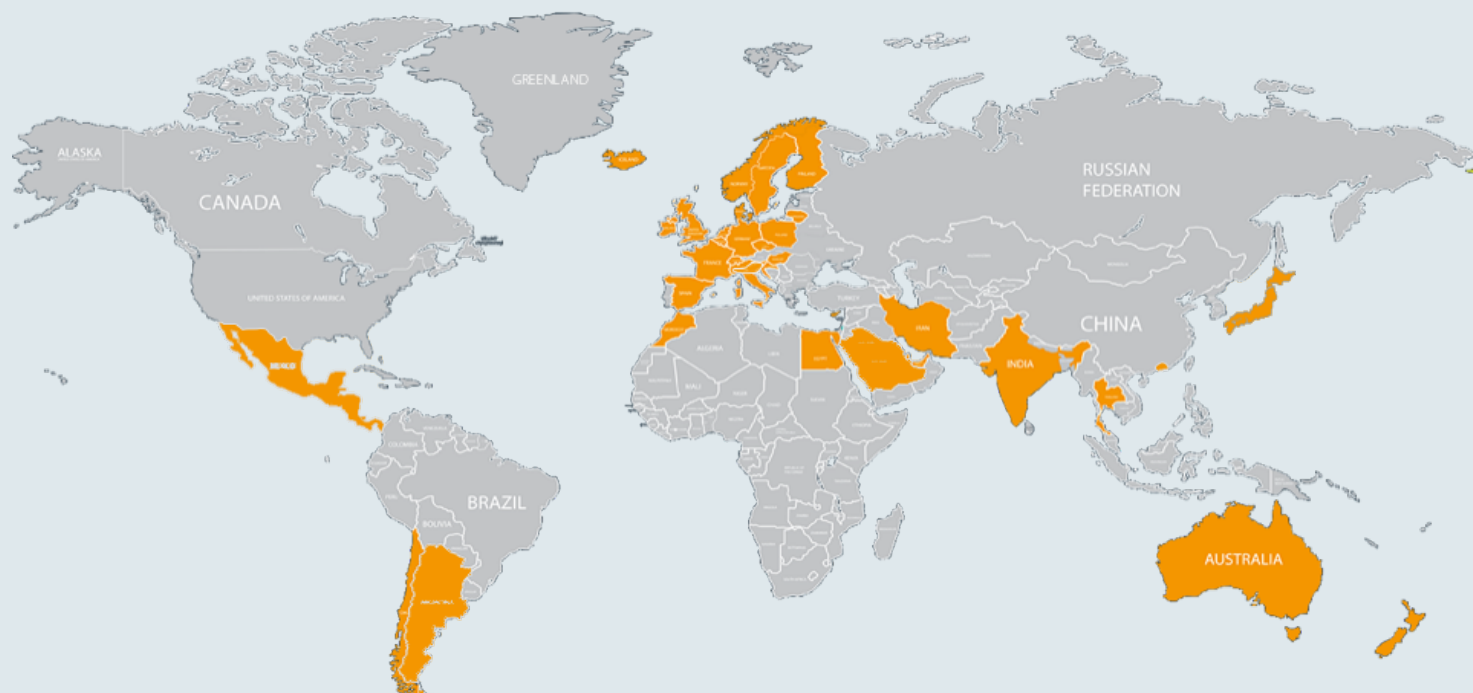
Medical technology since 1992

Care of Sweden is a member of the industry organization for medical technology in Sweden - Swedish Medtech.

We are also a proud sponsor of and participate actively in EPUAP - European Pressure Ulcer Advisory Panel.

We are ISO 13485 and ISO 14001 certified. We pride ourselves in rigorous testing and a culture aimed to provide best possible quality and outcomes for both caregivers and users.

Today, we are fighting pressure injuries in more than 30 nations.



Optimal 5zon®

The complete mattress for pressure injury prevention



Optimal 5zon with cover Olivia/Evac

 care of sweden
SUPPORTING LIFE

Optimal 5zon®

The Optimal 5zon® is ideal for all healthcare environments and is used as an aid in the prevention and treatment of pressure injuries up to and including category 2⁽¹⁾, and for pain therapy. It is a soft and flexible mattress replacement that is placed directly on the bed and replaces both the standard mattress and mattress pad.

It has very good pressure redistribution properties⁽²⁾ and is also equipped with the unique DuoCore® sit function. It has been designed to provide support when seated, while also offering good comfort in lying position.

Care of Sweden’s mattresses are supplied with a four way stretch hygienic outer cover which conforms to relevant standards for hygiene⁽³⁾, quality and safety. All covers are manufactured from modern, recyclable materials and are vapour permeable⁽⁴⁾, which reduce the risk of skin maceration.

Optimal 5zon® comes with several different options of covers. Cover Olivia/Evac is a 2-piece cover with handles for evacuation. It has a drip shield zipper on all sides.

SIZE

80/85/90/105/120x200 cm and 80/85/90x210 cm.
If you need any other sizes please contact Unicare Health.

REFERENCES

- (1)*Haesler, E. (Ed). National Pressure Ulcer Advisory Panel, European Pressure Ulcer Advisory Panel and Pan Pacific Pressure Injury Alliance. (2014). Prevention and Treatment of Pressure Ulcers: Clinical Guideline. Cambridge Media: Perth, Australia.
- (2) Examination of the shear force and the pressure relief capability, Berlin Cert 2009.
- (3) ISO 16603 “resistance of penetration by blood and body fluids”, ISO 16604 “resistance of penetration by blood-borne pathogens”, EN 14126.
- (4) SS-EN ISO 15496:2004, DIN 53122-1.
- (5) Patent no. 008522741.



Always read the instruction for use prior to usage of the product.



Care of Sweden, Optimal 5zon and DuoCore are trademarks of Care of Sweden AB. © Care of Sweden AB, 2019. All Rights Reserved.
Last update: 2019-09-11

FEATURES & CHARACTERISTICS	FACTS
<p>Pressure Highly elastic, high-quality material and a unique zone and module system gives effective pressure equalisation.</p> <p>Shear forces The mattress is specially designed to minimise the effects of shear forces.</p> <p>Sit function Our patented⁽⁵⁾ sit function DuoCore® is designed to give support when sitting and also to provide good comfort when lying.</p> <p>Moisture The hygienic cover is vapour permeable⁽⁴⁾, which reduces the risk of skin maceration.</p> <p>Hygiene The cover is easy to clean and has a very well documented hygienic standard⁽³⁾.</p>	<ul style="list-style-type: none">• Core: HR-foam 65+50 kg/m³• Height: 14 cm• Function: Prevention and treatment up to and including category 2⁽¹⁾• Recommended user weight: 0-180 kg• Fire: EN 597-1, -2• Warranty: 3 years• Cleaning of cover: Wipe with cleaning agent and/or disinfectants.• Machine wash max 95 °C, tumble drying

Optimal 5zon® Plus

Preventative mattress replacement for bariatric use



Plus

Optimal 5zon Plus with top part Olivia/bottom part 5zon

 **care of sweden**
SUPPORTING LIFE

Optimal 5zon® Plus

Optimal 5zon® Plus is used as an aid in the prevention and treatment of pressure injuries up to category 2⁽¹⁾, and is ideal for all healthcare environments. It is a mattress replacement that has been specially designed for bariatric use.

It is equipped with our unique DuoCore® sit function, which provides assistance and relief when seated, as well as very good comfort in a lying position. In addition, the DuoCore® is also beneficial when using a sliding board or other relocation aids.

The cover is equipped with a divisible, drip-shield zip and functional handles for simple transportation of the mattress.

Care of Sweden's mattresses are supplied with a four way stretch hygienic outer cover which conforms to relevant standards for hygiene⁽²⁾, quality and safety.

All covers are manufactured from modern, recyclable materials and are vapour permeable⁽³⁾, which reduce the risk of skin maceration.

SIZE

85/90/105/120x200/210 cm.
If you need any other sizes please contact Unicare Health.

REFERENCES

- (1) *Haesler, E. (Ed). National Pressure Ulcer Advisory Panel, European Pressure Ulcer Advisory Panel and Pan Pacific Pressure Injury Alliance. (2014). Prevention and Treatment of Pressure Ulcers: Clinical Guideline. Cambridge Media: Perth, Australia.
- (2) ISO 16603 “resistance of penetration by blood and body fluids”, ISO 16604 “resistance of penetration by blood-borne pathogens”, EN 14126.
- (3) SS-EN ISO 15496:2004, DIN 53122-1.
- (4) Patent no. 008522741



Always read the instruction for use prior to usage of the product.



Care of Sweden, Optimal 5zon and DuoCore are trademarks of Care of Sweden AB. © Care of Sweden AB, 2019. All Rights Reserved.
Last update: 2019-09-11

FEATURES & CHARACTERISTICS	FACTS
<p>User weight For batriatic use, recommended user weight is 0-300kg.</p> <p>Pressure Highly elastic, high-quality material and a unique zone and module system gives effective pressure equalisation.</p> <p>Shear forces The mattress is specially designed to minimise the effects of shear forces.</p> <p>Sit function Our patented⁽⁴⁾ sit function DuoCore® is designed to give support when sitting and also to provide good comfort when lying.</p> <p>Moisture The hygienic cover is vapour permeable⁽³⁾, which reduces the risk of skin maceration.</p> <p>Hygiene The cover is easy to clean and has a very well documented hygienic standard.</p>	<ul style="list-style-type: none">• Core: HR-foam 65+50 kg/m³• Height: 15 cm• Function: Prevention and treatment up to and including category 2⁽¹⁾• Recommended user weight: 0-300 kg• Fire: EN 597-1, -2• Warranty: 2 years• Cleaning of cover: Wipe with cleaning agent and/or disinfectants.• Machine wash max 95 °C, tumble drying.

CuroCell S.A.M.® PRO

Extraordinary comfort and durability combined



CuroCell S.A.M PRO with cover Steel

CuroCell S.A.M. ® PRO

The CuroCell S.A.M.® PRO overlay mattress can be used as an effective aid in the prevention and in the treatment of pressure injuries up to and including category 3⁽¹⁾. It can also be used as an aid for pain therapy. For additional comfort, the model CuroCell S.A.M.® PRO CF10 is also available. This model includes an extra soft inner cover that increases the comfort.

This constant low pressure mattress offers high level of comfort as well as effective pressure redistribution⁽²⁾. With the vastly improved higher maximum weight capacity of 250 kg, this overlay will meet the ever increasing challenges of heavier patients.

The CuroCell S.A.M.® PRO features a new cost effective pump that includes both CPR and Transport functions. The pump automatically determines when to change pressure in contrast to running constantly. This makes the pump silent running, vibration free, power efficient and long lasting.

Also available is the CuroCell S.A.M.® PRO CF16, which is a mattress replacement system equipped with an integrated foam core, which is placed directly onto the bed frame.

REFERENCES

(1) *Haesler, E. (Ed). National Pressure Ulcer Advisory Panel, Europe Pressure Ulcer Advisory Panel and Pan Pacific Pressure Injury Alliance.
(2014). Prevention and Treatment of Pressure Ulcers: Clinical Guideline. Cambridge Media: Perth, Australia.
(2) Examination of the shear force and the pressure relief capability, Berlin cert 2009.
(3) ISO 16603 “resistance of penetration by blood and body fluids”, ISO 16604 “resistance of penetration by blood-borne pathogens”, EN 14126.
(4) SS-EN ISO 15496:2004, DIN 53122-1.



Always read the instruction for use prior to usage of the product.



Care of Sweden, Optimal 5zon and DuoCore are trademarks of Care of Sweden AB. © Care of Sweden AB, 2019. All Rights Reserved.
Last update: 2019-09-23

FEATURES & CHARACTERISTICS	FACTS
<ul style="list-style-type: none">CPR function – rapid deflationSoft, elastic, vapour permeable⁽⁴⁾ hygienic cover with welded seamsVery good cleaning propertiesSilent running and durable pumpEasy to handle and maintainElastic fastening bandEnergy efficientMaximum Pressure (caring mode)Comfort settings on dial, 0-250 kg	<ul style="list-style-type: none">Type: Constant low pressure mattressHeight: 10 cmFunction: Prevention and treatment up to and including category 3⁽¹⁾Recommended user weight: 0-250 kgInput voltage: 230 V/50 HzSound level, pump, max: 28 dBWarranty: 2 yearsMachine wash max 95 °C, tumble dryingCleaning of cover: Wipe with cleaning agent and/or disinfectants
OPTIONAL	SIZE
<ul style="list-style-type: none">Extra soft inner cover (CF10) modelDurable bag for transportation and storage	<ul style="list-style-type: none">80/85/90/105/120x200/210 cm. If you need any other sizes please contact Unicare Health.

CuroCell S.A.M® PRO CF16

Versatile & durable mattress replacement system
with high level of comfort



Curocell S.A.M PRO CF16 with cover Olivia CuroCell

 care of sweden
SUPPORTING LIFE

CuroCell S.A.M. ® PRO CF16

The CuroCell S.A.M.® PRO CF16 mattress replacement system with an integrated foam core can be used as an effective aid in the prevention and in the treatment of pressure injuries up to and including category 3⁽¹⁾. It can also be used as an aid for pain therapy.

This constant low pressure mattress offers an exceptionally high level of comfort as well as excellent pressure redistribution⁽²⁾. With the vastly improved higher maximum weight capacity of 250 kg, this overlay will meet the ever increasing challenges of heavier patients.

The CuroCell S.A.M.® PRO CF16 features a new cost effective pump that includes both CPR and Transport functions. The pump automatically determines when to change pressure in contrast to running constantly.

This does not only make the pump virtually silent but it also makes it durable and long lasting. Thanks to the extra soft inner cover, the already low pressure⁽³⁾ is further reduced.

REFERENCES

(1) *Haesler, E. (Ed). National Pressure Ulcer Advisory Panel, European Pressure Ulcer Advisory Panel and Pan Pacific Pressure Injury Alliance. (2014). Prevention and Treatment of Pressure Ulcers: Clinical Guideline. Cambridge Media: Perth, Australia.
(2) Examination of the shear force and the pressure relief capability, Berlin Cert 2009.
(3) Pressure readings with Xsensor, 2008.
(4) ISO 16603 “resistance of penetration by blood and body fluids”, ISO 16604 “resistance of penetration by blood-borne pathogens”, EN 14126.
(5) SS-EN ISO 15496:2004, DIN 53122-1



Always read the instruction for use prior to usage of the product.



Care of Sweden, Optimal 5zon and DuoCore are trademarks of Care of Sweden AB. © Care of Sweden AB, 2019. All Rights Reserved.
Last update: 2019-08-08

FEATURES & CHARACTERISTICS	FACTS
<ul style="list-style-type: none">CPR function – rapid deflationSoft, elastic, vapour permeable⁽⁵⁾ hygienic coverVery good cleaning propertiesSilent running and durable pumpEasy to handle and maintainUnique labellingEnergy efficientMaximum Pressure (caring mode)Comfort settings on dial, 0-250 kgExtra soft inner coverHeel functionDurable bag for transportation and storage	<ul style="list-style-type: none">Type: Constant low pressure mattressHeight: 16 cmFunction: Prevention and treatment up to and including category 3⁽¹⁾Recommended user weight: 0-250 kgInput voltage: 230 V/50 HzSound level, pump, max: 28 dBWarranty: 2 yearsMachine wash max 95 °C, tumble dryingCleaning of cover: Wipe with cleaning agent and/or disinfectants
OPTIONAL	SIZE
<ul style="list-style-type: none">Hygiene cover with welded seams	<ul style="list-style-type: none">80/85/90/105/120x200/210 cm.If you need any other sizes please contact Unicare Health.

CuroCell® AREA Zone

Functional mattress replacement system
with self-adjusting technology



CuroCell AREA Zone with cover Stone/Duro

 care of sweden
SUPPORTING LIFE

CuroCell® AREA Zone

CuroCell® AREA Zone is used as an aid in the prevention and treatment of pressure injuries up to category 3⁽¹⁾. It is a mattress system that combines air with foam for effective pressure redistribution and great comfort. The mattress is self-adjusting and non-powered. It is a flexible mattress replacement system that can be used in all kinds of healthcare settings, easy to use and handle.

The mattress has good properties regarding pressure, shear and moisture^(2,3), three important elements related to effective prevention or treatment of pressure injuries. It contains nine air cells that are divided into zones, which adapt automatically to the user and provides an individual setting. It is built up with multiple layers of high quality foam. The mattress' special design reduces shear forces and with the built-in heel slope function it also reduces pressure on the heels.

CuroCell® AREA Zone has very good pressure redistribution properties and has received a rating of "High pressure relief"⁽²⁾ in external tests. When tested, the mattress' capacity of pressure redistribution (PAI) it is reported that 100 % of the pressure on the mattress is below the threshold of 30 mmHg (load 80 kg).



Care of Sweden's mattresses are supplied with a four way stretch hygienic outer cover which conforms to relevant standards for hygiene⁽⁴⁾, quality and safety. All covers are manufactured from modern, recyclable materials and are vapour permeable⁽⁵⁾, which reduce the risk of skin maceration.

SIZE

80/85/90/105/120x200/210 cm.
If you need any other sizes please contact Unicare Health.

REFERENCES

(1) *Haesler, E. (Ed). National Pressure Ulcer Advisory Panel, European Pressure Ulcer Advisory Panel and Pan Pacific Pressure Injury Alliance. (2014). Prevention and Treatment of Pressure Ulcers: Clinical Guideline. Cambridge Media: Perth, Australia.
(2) Examination of the pressure relief capability, Berlin Cert 2012.
(3) SS-EN ISO 15496: 2004, DIN 53122-1.
(4) ISO 16603 "resistance of penetration by blood and body fluids", ISO 16604 "resistance of penetration by blood-borne pathogens", EN 14126
(5) SS-EN ISO 15496: 2004



Always read the instruction for use prior to usage of the product.

Care of Sweden, Optimal 5zon and DuoCore are trademarks of Care of Sweden AB. © Care of Sweden AB, 2019. All Rights Reserved.
Last update: 2019-08-15

FEATURES & CHARACTERISTICS	FACTS
<ul style="list-style-type: none">A zone system in the top mattressEasy to handle and maintainFlexible and self-adjustingHandle for transportationHygienic cover with welded seamsInner cover of high qualityIntegrated heel functionNon-powered mattress replacement systemReinforced sides for improved stabilityUnique markings on the mattress and cover	<ul style="list-style-type: none">Type: Pressure redistribution air/foam mattressHeight: 18 cmFunction: Prevention and treatment up toand including category 3⁽¹⁾Recommended user weight: 0-230 kg⁽²⁾Fire: EN 597-1, -2Warranty: 5 yearsCleaning of cover: Wipe with cleaning agent and/or disinfectants.Machine wash max 95 °C, tumble drying.
OPTIONAL	
<ul style="list-style-type: none">Evac coverSturdy transport and storage bag	

CuroCell® NEO CX19

Effective & functional mattress replacement system



CuroCell NEO CX19 with cover Olivia

CuroCell® NEO CX19

CuroCell® NEO CX19 is used as an aid in the prevention and treatment of pressure injuries up to and including category 4⁽¹⁾. It is used in all types of healthcare environments and is a very effective and functional mattress replacement system.

CuroCell® NEO CX19 works according to the alternating pressure principle and are available in several different versions. It has replaceable cells in polyurethane which are placed in a separate inner cover and is equipped with an integrated foam core.

Care of Sweden’s mattresses are supplied with a four way stretch hygienic outer cover which conforms to relevant standards for hygiene⁽²⁾, quality and safety. All covers are manufactured from modern, recyclable materials and are vapour permeable⁽³⁾, which reduce the risk of skin maceration.

Care of Sweden’s mattresses are supplied with a four way stretch hygienic outer cover which conforms to relevant standards for hygiene⁽²⁾, quality and safety. All covers are manufactured from modern, recyclable materials and are vapour permeable⁽³⁾, which reduce the risk of skin maceration.

REFERENCES

- (1) National Pressure Ulcer Advisory Panel, European Pressure Ulcer Advisory Panel and Pan Pacific Pressure Injury Alliance. Prevention and Treatment of Pressure Ulcers: Quick Reference Guide. Emily Haesler (Ed.). Cambridge Media: Osborne Park, Western Australia; 2014.
- (2) ISO 16603 “resistance of penetration by blood and body fluids”, ISO 16604 “resistance of penetration by blood-borne pathogens”, EN 4126,
- (3) SS-EN ISO 15496:2004, DIN 53122-1



Always read the instruction for use prior to usage of the product.



Care of Sweden, Optimal 5zon and DuoCore are trademarks of Care of Sweden AB. © Care of Sweden AB, 2020. All Rights Reserved.
Last update: 2020-02-21

FEATURES & CHARACTERISTICS	FACTS
<ul style="list-style-type: none">CPR function – rapid deflationSoft, elastic, vapour permeable⁽³⁾ hygienic coverVery good cleaning propertiesSilent running and durable pumpEasy to handle and maintainCLP (constant low pressure) with automatic returnDigital pump with built-in sensorReplaceable air cells of polyurethaneSound and light notification for low pressureSound and light notification for power failureTransport functionHeel function	<ul style="list-style-type: none">Type: Alternating pressure mattress replacement systemHeight: 19 cmFunction: Prevention and treatment up to and including category 4⁽¹⁾Recommended user weight: 0-160 kgInput voltage: 230 V/50 HzSound level, pump, max: 27 dBAWarranty: 2 yearsMachine wash max 95 °C, tumble dryingCleaning of cover: Wipe with cleaning agent and/or disinfectants
OPTIONAL	SIZE
<ul style="list-style-type: none">Hygienic cover with welded seamsDurable bag for transportation and storage	<ul style="list-style-type: none">80/85/90/105/120x200cm and 80/85/90x210cm.If you need any other sizes please contact Unicare Health

CuroCell® A4 CX10

A fully automated and flexible alternating pressure mattress overlay system



CuroCell A4 CX10 with cover Stone

CuroCell® A4 CX10

The CuroCell® A4 CX10 provides simplicity together with user comfort while effectively aiding in the prevention and treatment of pressure injuries up to and including category 4, and unstageable pressure injuries. It is designed for simplicity and provides features for excellent user comfort, reduction of shear forces and improvement of the microclimate.

The CuroCell® A4 CX10 mattress system includes an intelligent pump with a user-friendly interface. It is fully automatic without need for manual settings. The system identifies the user and automatically manages all settings to optimise the pressure according to the user’s needs.

All mattresses are supplied with a four way stretch hygienic cover which meets standards for hygiene⁽³⁾, quality and safety. All covers are manufactured from modern, recyclable materials and are vapour permeable⁽⁴⁾, which reduce the risk of skin maceration.

OPTIONAL

- Durable bag
- Sheet holder

SIZES

80/85/90/100/105/120x200/210 x 10 cm

REFERENCES

- 1) National Pressure Ulcer Advisory Panel, European Pressure Ulcer Advisory Panel and Pan Pacific Pressure Injury Alliance. Prevention and Treatment of Pressure Ulcers: Quick Reference Guide. Emily Haesler (Ed.). Cambridge Media: Osborne Park, Western Australia; 2014.
- (2) "EN ISO 11201 Acoustics - Noise emitted by machinery and equipment - Determination of emission sound pressure levels", SP 2018.
- (3) ISO 16603 "resistance of penetration by blood and body fluids", ISO 16604 "resistance of penetration by blood-borne pathogens", EN 14126, "performance requirements and tests methods for protective clothing against infective agents".
- (4) SS-EN ISO 15496:2004, DIN 53122-1.



Always read the instruction for use prior to usage of the product.



Care of Sweden, Optimal 5zon and DuoCore are trademarks of Care of Sweden AB. © Care of Sweden AB, 2020. All Rights Reserved.
Last update: 2020-02-04

FEATURES MATTRESS	FACTS
<ul style="list-style-type: none">• Individually replaceable cells• Multifunctional inner cover• Heel function• Unique CPR-function with transport function• Unique design for easy handling and usage• Well protected zipper	<ul style="list-style-type: none">• Type: Alternating pressure mattress overlay system• Height: 10 cm• Recommended user weight: 0-200kg• Input voltage: 100-240V / 50-60 Hz• Sound level, pump, max.: 17 dBA• Warranty: 2 years• PVC free• Machine wash max 95 °C, tumble drying• Cleaning of cover: Wipe with cleaning agent and/or disinfectants• Chlorine resistant (1%) multi stretch cover (cover Stone with welded seams, 10%)
FEATURES PUMP	
<ul style="list-style-type: none">• Fully automated pump• Multifunctional inner cover• Heel function• Unique CPR-function with transport function• Unique design for easy handling and usage• Well protected zipper	

CuroCell® A4 CX15

A fully automatic and flexible alternating pressure mattress replacement system with high level of comfort and functionality



reddot award 2019
winner



DESIGN
AWARD
2019



CuroCell A4 CX15 with Top part Stone/bottom part CuroCell

 care of sweden
SUPPORTING LIFE

CuroCell® A4 CX15

The CuroCell® A4 CX15 provides simplicity together with user comfort while effectively aiding in the prevention and treatment of pressure injuries up to and including category 4, and unstageable pressure injuries. It is designed for simplicity and provides features for excellent user comfort, reduction of shear forces and improvement of microclimate.

The CuroCell® A4 CX15 mattress system includes an intelligent pump with a user-friendly interface. It is fully automatic without need for manual settings. The system identifies the user and automatically manages all settings to optimise the pressure according to the user’s needs.

All mattresses are supplied with a four way stretch hygienic cover which meets standards for hygiene⁽³⁾, quality and safety. All covers are manufactured from modern, recyclable materials and are vapour permeable⁽⁴⁾, which reduce the risk of skin maceration.

OPTIONAL

- Durable bag
- Sheet holder

SIZES

80/85/90/100/105/120x200/210 x 10 cm

REFERENCES

- 1) National Pressure Ulcer Advisory Panel, European Pressure Ulcer Advisory Panel and Pan Pacific Pressure Injury Alliance. Prevention and Treatment of Pressure Ulcers: Quick Reference Guide. Emily Haesler (Ed.). Cambridge Media: Osborne Park, Western Australia; 2014.
- (2) "EN ISO 11201 Acoustics - Noise emitted by machinery and equipment - Determination of emission sound pressure levels", SP 2018.
- (3) ISO 16603 "resistance of penetration by blood and body fluids", ISO 16604 "resistance of penetration by blood-borne pathogens", EN 14126, "performance requirements and tests methods for protective clothing against infective agents".
- (4) SS-EN ISO 15496:2004, DIN 53122-1.



Always read the instruction for use prior to usage of the product.



Care of Sweden, Optimal 5zon and DuoCore are trademarks of Care of Sweden AB. © Care of Sweden AB, 2020. All Rights Reserved.
Last update: 2020-01-22

FEATURES MATTRESS	FACTS
<ul style="list-style-type: none">• Individually replaceable cells with safety mattress• Static head cells• Heel function• Multifunctional inner cover• Unique CPR-function with transport function• Smart cable management• Unique design for easy handling and usage• Well protected zipper	<ul style="list-style-type: none">• Type: Alternating pressure mattress replacement system• Height: 15 cm• Recommended user weight: 0-200 kg• Input voltage: 100-240 V / 50-60 Hz• Sound level, pump, max.: 17 dBA⁽²⁾• Warranty: 2 years• PVC free• Machine wash max 95 °C, tumble drying• Cleaning of cover: Wipe with cleaning agent and/or disinfectants• Chlorine resistant (1%) multi stretch cover (cover Stone with welded seams, 10%)
FEATURES PUMP	
<ul style="list-style-type: none">• Fully automated pump that adapts individually• User friendly interface• Audible and visual notifications• Three program modes: Pulsating, Alternating and CLP (constant low pressure)• Caring Mode (max-firm)• Pack & Go function• Silent running and vibration free• Low voltage (12V power supply)• Soft friction hangers with extra soft top• Air flow control; Constant temperature, increased user comfort, energy reduction	

CuroCell® A4 CX16

An automatic mattress replacement system with a dynamic function and with good comfort and functionality



reddot award 2019
winner



DESIGN
AWARD
2019



CuroCell A4 CX16 with Top part Stone/bottom part CuroCell

 care of sweden
SUPPORTING LIFE

CuroCell® A4 CX16

The CuroCell® A4 CX16 provides simplicity together with user comfort while aiding in the prevention and treatment of pressure injuries up to and including category 4, and unstageable pressure injuries. It is designed for simplicity and provides features for good user comfort, reduction of shear forces and improvement of the microclimate.

CuroCell® A4 CX16 has an automatic control unit with a user-friendly interface. The mattress system regulates independently and without manual adjustment the inner pressure of the mattress to different values based on the user’s weight and position. No manual action needs to be done to adjust the internal pressure of the mattress.

The control unit is equipped with the pulsating mode. With the pulsating mode, the benefits from constant low pressure (reduced maximum pressure) and the pressure-relieving effect of the dynamic mode are combined. Pulsating mode means that the pressure alternates and cells are emptied, but not completely. This gives a lower maximum pressure against the skin and slight movements in the mattress, which contributes to increased comfort and stability.

The clinical effect of the pulsating mode has been investigated in scientific studies where both tissue perfusion, as well as prevention and therapeutic effect is measured⁽⁷⁾⁽⁸⁾.

All mattresses are supplied with a four way stretch hygienic cover which meets standards for hygiene, quality and safety⁽³⁾⁽⁵⁾. All covers are manufactured from modern, recyclable materials and are vapour permeable⁽⁴⁾, which contributes to reduce the risk of skin maceration.

REFERENCES

(1) European Pressure Ulcer Advisory Panel, National Pressure Injury Advisory Panel and Pan Pacific Pressure Injury Alliance. Prevention and Treatment of Pressure Ulcers/Injuries: Clinical Practice Guideline. The International Guideline. Emily Haesler (Ed). EPUAP/NPIAP/PPPIA: 2019
(2): "EN ISO 11201 Acoustics - Noise emitted by machinery and equipment - Determination of emission sound pressure levels", SP 2018.
(3) CDC (2003), Guidelines for Environmental Infection Control in Health-Care facilities, updated 2019.
(4) SS-EN ISO 15496:2004, DIN 53122-1.
(5) SS 876 00 20:2017, Healthcare textiles - Mattresses - Specifications and requirements.
(6) ISO 3746:2010 "Acoustics - Determination of sound power levels and sound energy levels of noise sources using sound pressure - Survey method using an enveloping measurement surface over a reflecting plane"
(7) Zwaenepoel, E., et al., Int Wound J, 2020 17(1).
(8) Worsley P, Dr Bostan L., Bader D. Investigation of the biomechanical and physiological responses to prolonged lying postures during three mattress modes. Report from University of Southampton, 2018.



Always read the instruction for use prior to usage of the product.

FEATURES MATTRESS	FACTS
<ul style="list-style-type: none">Individually replaceable cells with safety mattress in HR-foamHeel functionMultifunctional inner coverCPR-function with transport functionSmart cable managementEasy handling and usageWell protected zipper	<ul style="list-style-type: none">Type: Alternating pressure mattress replacement systemHeight: 20 cmRecommended user weight: 0-200 kgInput voltage: 100-240 V / 50-60 HzSound level, pump, max.: 17 dBA(2)Warranty: 2 yearsPVC freeMachine wash max 95 °C, tumble dryingCleaning of cover: Wipe with cleaning agent and/or disinfectantsChlorine resistant (1%) multi stretch cover (cover Stone with welded seams, 10%)
FEATURES PUMP	
<ul style="list-style-type: none">Automatic control unit which adapts individual to the userUser friendly interfaceAudible and visual notificationsThree program modes: pulsating mode, alternating mode and constant low pressureCaring mode (max-firm)Pack&Go functionSilent running and vibration freeLow voltage (12V power supply)Soft friction hangers with soft tipAir flow control; Constant temperature, good user comfort, energy reduction.	
	OPTIONAL <ul style="list-style-type: none">Durable bagSheet holder SIZES <ul style="list-style-type: none">80/85/90/100/105/120x200/210 x 16 cm

CuroCell® A4 CX20

A fully automatic and flexible alternating pressure mattress replacement system with high level of comfort and functionality



CuroCell A4 CX20 with Top part Stone/bottom part CuroCell

 care of sweden
SUPPORTING LIFE

CuroCell® A4 CX20

The CuroCell® A4 CX20 provides simplicity together with user comfort while effectively aiding in the prevention and treatment of pressure injuries up to and including category 4, and unstageable pressure injuries. It is designed for simplicity and provides features for excellent user comfort, reduction of shear forces and improvement of the microclimate.

The CuroCell® A4 CX20 mattress system includes an intelligent pump with a user-friendly interface. It is fully automatic without need for manual settings. The system identifies the user and automatically manages all settings to optimise the pressure according to the user’s needs.

All mattresses are supplied with a four way stretch hygienic cover which meets standards for hygiene⁽³⁾, quality and safety. All covers are manufactured from modern, recyclable materials and are vapour permeable⁽⁴⁾, which reduce the risk of skin maceration.

OPTIONAL

- Durable bag
- Sheet holder

SIZES

80/85/90/100/105/120x200/210 x 10 cm

REFERENCES

- (1) National Pressure Ulcer Advisory Panel, European Pressure Ulcer Advisory Panel and Pan Pacific Pressure Injury Alliance. Prevention and Treatment of Pressure Ulcers: Quick Reference Guide. Emily Haesler (Ed.). Cambridge Media: Osborne Park, Western Australia; 2014.
- (2) "EN ISO 11201 Acoustics - Noise emitted by machinery and equipment - Determination of emission sound pressure levels", SP 2018.
- (3) ISO 16603 "resistance of penetration by blood and body fluids", ISO 16604 "resistance of penetration by blood-borne pathogens", EN 14126, "performance requirements and tests methods for protective clothing against infective agents".
- (4) SS-EN ISO 15496:2004, DIN 53122-1.



Always read the instruction for use prior to usage of the product.



Care of Sweden, Optimal 5zon and DuoCore are trademarks of Care of Sweden AB. © Care of Sweden AB, 2019. All Rights Reserved.
Last update: 2019-05-28

FEATURES MATTRESS	FACTS
<ul style="list-style-type: none">• Individually replaceable cells with safety mattress• Static head cells• Heel function• Multifunctional inner cover• Unique CPR-function with transport function• Smart cable management• Unique design for easy handling and usage• Well protected zipper	<ul style="list-style-type: none">• Type: Alternating pressure mattress replacement system• Height: 20 cm• Recommended user weight: 0-250 kg• Input voltage: 100-240 V / 50-60 Hz• Sound level, pump, max.: 17 dBA⁽²⁾• Warranty: 2 years• PVC free• Machine wash max 95 °C, tumble drying• Cleaning of cover: Wipe with cleaning agent and/or disinfectants• Chlorine resistant (1%) multi stretch cover(cover Stone with welded seams, 10%)
FEATURES PUMP	
<ul style="list-style-type: none">• Fully automated pump that adapts individually• User friendly interface• Audible and visual notifications• Three program modes: Pulsating, Alternating and CLP(constant low pressure)• Caring mode (max-firm)• Pack & Go function• Silent running and vibration free• Low voltage (12V power supply)• Soft friction hangers with extra soft tip• Air flow control; Constant temperature, increased user comfort, energy reduction	

CuroCell® A4 Cirrus

Pain therapy pressure care system



CuroCell A4 Cirrus with Top part Stone/bottom part Evac

CuroCell® A4 Cirrus

CuroCell® A4 Cirrus is used as an aid in the prevention and treatment of pressure injuries up to and including category 4⁽¹⁾ and unstageable pressure injuries as well as an aid in pain therapy. It is a replacement system suitable for all healthcare environments.

CuroCell® A4 Cirrus combines air with a soft foam surface and provides high user comfort and pressure redistribution⁽³⁾. The combination of air and foam makes the system suitable as an aid in pain therapy. The added heel function offers an even better pressure redistribution on the heels.

The CuroCell® A4 Cirrus mattress system includes an intelligent control unit with a user-friendly interface. It is fully automatic without need for manual settings. The system identifies the user and automatically manages all settings to optimise the pressure according to the user's needs.

All mattresses are supplied with a four way stretch hygienic cover which meets standards for hygiene⁽⁴⁾, quality and safety. All covers are manufactured from modern, recyclable materials and are vapour permeable⁽⁵⁾, which reduce the risk of skin maceration.



OPTIONAL

- Durable bag
- Low friction cover
- Sheet holder

SIZES

80/85/90/100/105/120 x 200/210 x 20cm

REFERENCES

(1) *Haesler, E. (Ed). National Pressure Ulcer Advisory Panel, European Pressure Ulcer Advisory Panel and Pan Pacific Pressure Injury Alliance. (2014). Prevention and Treatment of Pressure Ulcers: Clinical Guideline. Cambridge Media: Perth, Australia
(2) EN ISO 11201 "Acoustics - Noise emitted by machinery and equipment - Determination of emission sound pressure levels", SP 2018.
(3) Examination of the shear force and the pressure relief capability, Berlin Cert 2009.
(4) ISO 16603 "resistance of penetration by blood and body fluids", ISO 16604 "resistance of penetration by blood-borne pathogens", EN 14126.
(5) SS-EN ISO 15496:2004, DIN 53122-1.
(6) ISO 3746:2010 "Acoustics - Determination of sound power levels and sound energy levels of noise sources using sound pressure - Survey method using an enveloping measurement surface over a reflecting plane".
(7) Dr Peter Worsley, Dr Luciana Bostan and Professor Dan Bader. Investigation of the bio-mechanical and physiological responses to prolonged lying postures during three mattress modes. Unpublished manuscript. University of Southampton, 2018.
(8) Beeckman D., Van Hecke A., Verhaeghe S., Van Damme N., Manderlier B., Zwaenepoel E. The use of a fully automated pulsating support system (CuroCell® A4 CX20) in pressure ulcer prevention and treatment: a clinical test in 10 Belgian nursing homes, International Wound Journal. Gent University, 2019



Always read the instruction for use prior to usage of the product.

Care of Sweden, Optimal 5zon and DuoCore are trademarks of Care of Sweden AB. © Care of Sweden AB, 2020. All Rights Reserved.
Last update: 2020-04-02

FEATURES MATTRESS	FACTS
<ul style="list-style-type: none">• Soft foam surface• Smart cable management• Easy handling and cleaning• Heel slope, for pressure redistribution of heels• Hygienic cover with welded seams• Soft, elastic, vapour permeable hygienic cover• Unique CPR-function with transport function	<ul style="list-style-type: none">• Type: Dynamic pressure mattress• Height: 21 cm• Function: As an aid in the prevention and treatment of pressure injuries up to and including category 4⁽¹⁾ and unstageable as well as an aid in pain therapy.• Recommended user weight: 0-230 kg• Fire: EN 597-1, -2• Sound level of control unit, max: 17 dBA⁽²⁾, 35 dBA⁽⁶⁾• Warranty: 2 years• PVC free• Cleaning of cover: Wipe with cleaning agent and/or disinfectants• Machine wash max 95 °C, tumble drying• Chlorine resistant (10%) multi stretch cover
FEATURES PUMP	
<ul style="list-style-type: none">• Fully automated pump that adapts individually• User friendly interface• Audible and visual notifications• Three program modes: Pulsating, Alternating and CLP (constant low pressure)• Caring mode (max-firm)• Pack&Go function• Silent running and vibration free• Low voltage (12V power supply)• Soft friction hangers with extra soft tip• Air flow control; Constant temperature, increased user comfort, energy reduction	

CuroCell® IQ CX15

Intelligent simplicity



reddot award 2019
winner



DESIGN
AWARD
2019



CuroCell A4 CX15 with Top part Stone/bottom part CuroCell

 care of sweden

SUPPORTING LIFE

CuroCell® IQ CX15

The CuroCell® IQ CX15 provides simplicity together with user comfort while effectively aiding in the prevention and treatment of pressure injuries up to and including category 4⁽¹⁾, and unstageable pressure injuries. It is designed for simplicity and provides features for excellent user comfort, reduction of shear forces and improvement of microclimate.

The CuroCell® IQ CX15 identifies the user and automatically adapts itself to the individual. The pump is preset to our newly developed Pulsating mode, which offers a high level of comfort and effective pressure relief⁽⁶⁾⁽⁷⁾.

All mattresses are supplied with a four way stretch hygienic cover which meets standards for hygiene⁽³⁾, quality and safety. All covers are manufactured from modern, recyclable materials and are vapour permeable⁽⁴⁾, which reduce the risk of skin maceration.

OPTIONAL

- Durable bag
- Sheet holder

SIZES

80/85/90/100/105/120 x200/210 x 15 cm

REFERENCES

- (1) *Haesler, E. (Ed). National Pressure Ulcer Advisory Panel, European Pressure Ulcer Advisory Panel and Pan Pacific Pressure Injury Alliance. (2014). Prevention and Treatment of Pressure Ulcers: Clinical Guideline. Cambridge Media: Perth, Australia.
- (2) EN ISO 11201 “Acoustics - Noise emitted by machinery and equipment - Determination of emission sound pressure levels”, SP 2018.
- (3) ISO 16603 “Resistance of penetration by blood and body fluids”, ISO 16604 “resistance of penetration by blood-borne pathogens”, EN 14126, “performance requirements and tests methods for protective clothing against infective agents”.
- (4) SS-EN ISO 15496:2004, DIN 53122-1.
- (5) ISO 3746:2010 “Acoustics - Determination of sound power levels and sound energy levels of noise sources using sound pressure - Survey method using an enveloping measurement surface over a reflecting plane”.
- (6) Dr Peter Worsley, Dr Luciana Bostan and Professor Dan Bader. Investigation of the biomechanical and physiological responses to prolonged lying postures during three mattress modes. Unpublished manuscript. University of Southampton, 2018.
- (7) Beeckman D., Van Hecke A., Verhaeghe S., Van Damme N., Manderlier B., Zwaenepoel E. The use of a fully automated pulsating support system (CuroCell® A4 CX20) in pressure ulcer prevention and treatment: a clinical test in 10 Belgian nursing homes, International Wound Journal. Gent University, 2019.



Always read the instruction for use prior to usage of the product.

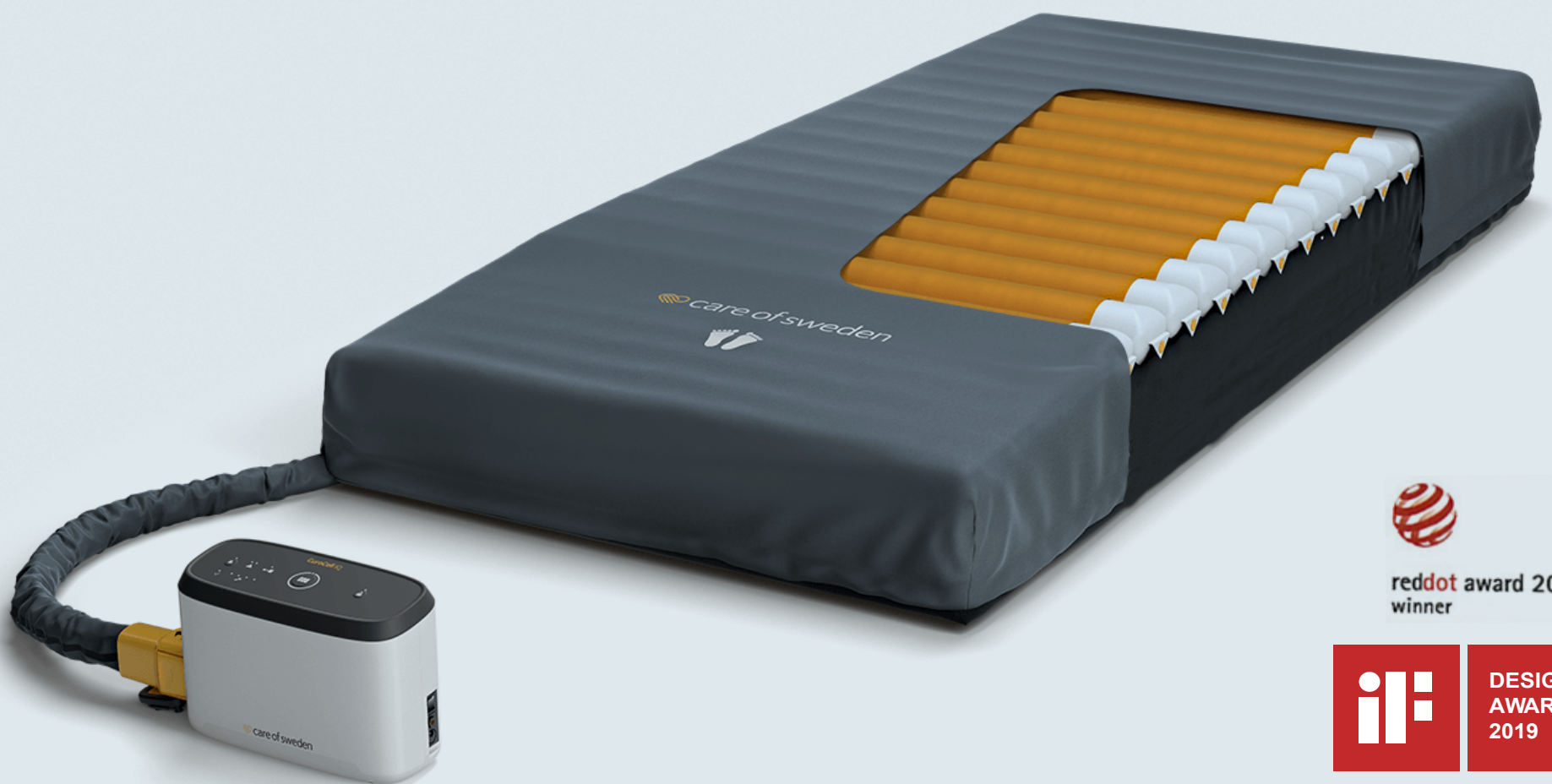


Care of Sweden, Optimal 5zon and DuoCore are trademarks of Care of Sweden AB. © Care of Sweden AB, 2019. All Rights Reserved.
Last update: 2020-11-13

FEATURES MATTRESS	FACTS
<ul style="list-style-type: none">• Individually replaceable cells with safety mattress in air• Heel function• Multifunctional inner cover• Unique CPR-function with transport function• Smart cable management• Designed for easy handling and usage• Well protected zipper	<ul style="list-style-type: none">• Type: Alternating pressure mattress replacement system• Height: 15 cm• Recommended user weight: 0-200 kg• Input voltage: 100-240 V / 50-60 Hz• Sound level, pump, max: 17 dBA⁽²⁾, 35 dBA⁽⁵⁾• Warranty: 2 years• PVC free• Machine wash max 95 °C, tumble drying• Cleaning of cover: Wipe with cleaning agent and/or disinfectants• Chlorine resistant (1%) multi stretch cover (cover Stone with welded seams, 10%)
FEATURES PUMP	
<ul style="list-style-type: none">• Fully automated pump that adapts individually• User friendly interface• Audible and visual notifications• Three program modes: Pulsating, Alternating and CLP (constant low pressure)• Caring mode (max-firm)• Pack&Go function• Silent running and vibration free• Low voltage (12V power supply)• Soft friction hangers with extra soft tip• Air flow control; Constant temperature, increased user comfort, energy reduction	

CuroCell® IQ CX20

Intelligent simplicity



reddot award 2019
winner



DESIGN
AWARD
2019



CuroCell A4 CX20 with Top part Stone/bottom part CuroCell

 care of sweden
SUPPORTING LIFE

CuroCell® IQ CX20

The CuroCell® IQ CX20 provides simplicity together with user comfort while effectively aiding in the prevention and treatment of pressure injuries up to and including category 4⁽¹⁾, and unstageable pressure injuries. It is designed for simplicity and provides features for excellent user comfort, reduction of shear forces and improvement of microclimate.

The CuroCell® IQ CX20 identifies the user and automatically adapts itself to the individual. The pump is preset to our newly developed Pulsating mode, which offers a high level of comfort and effective pressure relief⁽⁶⁾⁽⁷⁾.

All mattresses are supplied with a four way stretch hygienic cover which meets standards for hygiene⁽³⁾, quality and safety. All covers are manufactured from modern, recyclable materials and are vapour permeable⁽⁴⁾, which reduce the risk of skin maceration.

OPTIONAL

- Durable bag
- Sheet holder

SIZES

80/85/90/100/105/120 x 200/210 x 20cm

REFERENCES

- (1) *Haesler, E. (Ed). National Pressure Ulcer Advisory Panel, European Pressure Ulcer Advisory Panel and Pan Pacific Pressure Injury Alliance. (2014). Prevention and Treatment of Pressure Ulcers: Clinical Guideline. Cambridge Media: Perth, Australia.
- (2) EN ISO 11201 "Acoustics - Noise emitted by machinery and equipment - Determination of emission sound pressure levels", SP 2018.
- (3) ISO 16603 "Resistance of penetration by blood and body fluids", ISO 16604 "resistance of penetration by blood-borne pathogens", EN 14126, "performance requirements and tests methods for protective clothing against infective agents".
- (4) SS-EN ISO 15496:2004, DIN 53122-1.
- (5) ISO 3746:2010 "Acoustics - Determination of sound power levels and sound energy levels of noise sources using sound pressure - Survey method using an enveloping measurement surface over a reflecting plane".
- (6) Dr Peter Worsley, Dr Luciana Bostan and Professor Dan Bader. Investigation of the biomechanical and physiological responses to prolonged lying postures during three mattress modes. Unpublished manuscript. University of Southampton, 2018.
- (7) Beeckman D., Van Hecke A., Verhaeghe S., Van Damme N., Manderlier B., Zwaenepoel E. The use of a fully automated pulsating support system (CuroCell® A4 CX20) in pressure ulcer prevention and treatment: a clinical test in 10 Belgian nursing homes, International Wound Journal. Gent University, 2019.



Always read the instruction for use prior to usage of the product.



Care of Sweden, Optimal 5zon and DuoCore are trademarks of Care of Sweden AB. © Care of Sweden AB, 2019. All Rights Reserved.
Last update: 2019-11-13

FEATURES MATTRESS	FACTS
<ul style="list-style-type: none">• Individually replaceable cells with safety mattress in air• Heel function• Multifunctional inner cover• Unique CPR-function with transport function• Smart cable management• Designed for easy handling and usage• Well protected zipper	<ul style="list-style-type: none">• Type: Alternating pressure mattress replacement system• Height: 20 cm• Recommended user weight: 0-250 kg• Input voltage: 100-240 V / 50-60 Hz• Sound level, pump, max: 17 dBA⁽²⁾, 35 dBA⁽⁵⁾• Warranty: 2 years• PVC free• Machine wash max 95 °C, tumble drying• Cleaning of cover: Wipe with cleaning agent and/or disinfectants• Chlorine resistant (1%) multi stretch cover• (cover Stone with welded seams, 10%)
FEATURES PUMP	
<ul style="list-style-type: none">• Fully automated pump that adapts individually• User friendly interface• Audible and visual notifications• Newly developed pulsating mode• Caring mode (max-firm)• Pack & Go function• Silent running and vibration free• Low voltage (12V power supply)• Soft friction hangers with extra soft tip• Air flow control; Constant temperature, increased user comfort, energy reduction	

CuroCell® IQ Cirrus

Pain therapy pressure care system



CuroCell IQ Cirrus with Top part Stone/bottom part Evac

 care of sweden
SUPPORTING LIFE

CuroCell® IQ Cirrus

CuroCell® IQ Cirrus is used as an aid in the prevention and treatment of pressure injuries up to and including category 4⁽¹⁾ and unstageable pressure injuries. It is a replacement system suitable for all healthcare environments.

CuroCell® IQ Cirrus combines air with a soft foam surface and provides high user comfort and pressure redistribution⁽³⁾. The combination of air and foam makes the system suitable as an aid in pain therapy. The added heel function offers an even better pressure redistribution on the heels.

The CuroCell® IQ Cirrus identifies the user and automatically adapts itself to the individual. The control unit is preset to our newly developed Pulsating mode, which offers a high level of comfort and effective pressure redistribution⁽⁷⁾⁽⁸⁾.

All mattresses are supplied with a four way stretch hygienic cover which meets standards for hygiene⁽⁴⁾, quality and safety. All covers are manufactured from modern, recyclable materials and are vapour permeable⁽⁵⁾, which reduce the risk of skin maceration.

OPTIONAL

- Durable bag
- Low friction cover
- Sheet holder

SIZES

80/85/90/100/105/120 x 200/210 x 20cm

REFERENCES

- (1) *Haesler, E. (Ed). National Pressure Ulcer Advisory Panel, European Pressure Ulcer Advisory Panel and Pan Pacific Pressure Injury Alliance. (2014). Prevention and Treatment of Pressure Ulcers: Clinical Guideline. Cambridge Media: Perth, Australia
- (2) EN ISO 11201 "Acoustics - Noise emitted by machinery and equipment - Determination of emission sound pressure levels", SP 2018.
- (3) Examination of the shear force and the pressure relief capability, Berlin Cert 2009.
- (4) ISO 16603 "resistance of penetration by blood and body fluids", ISO 16604 "resistance of penetration by blood-borne pathogens", EN 14126.
- (5) SS-EN ISO 15496:2004, DIN 53122-1.
- (6) ISO 3746:2010 "Acoustics - Determination of sound power levels and sound energy levels of noise sources using sound pressure - Survey method using an enveloping measurement surface over a reflecting plane".
- (7) Dr Peter Worsley, Dr Luciana Bostan and Professor Dan Bader. Investigation of the biomechanical and physiological responses to prolonged lying postures during three mattress modes. Unpublished manuscript. University of Southampton, 2018.
- (8) Beeckman D., Van Hecke A., Verhaeghe S., Van Damme N., Manderlier B., Zwaenepoel E. The use of a fully automated pulsating support system (CuroCell® A4 CX20) in pressure ulcer prevention and treatment: a clinical test in 10 Belgian nursing homes, International Wound Journal. Gent University, 2019



Always read the instruction for use prior to usage of the product.



Care of Sweden, Optimal 5zon and DuoCore are trademarks of Care of Sweden AB. © Care of Sweden AB, 2020. All Rights Reserved.
Last update: 2020-03-23

FEATURES MATTRESS	FACTS
<ul style="list-style-type: none">• Soft foam surface• Smart cable management• Easy handling and cleaning• Heel slope, for pressure redistribution of heels• Hygienic cover with welded seams• Soft, elastic, vapour permeable⁽⁵⁾ hygienic cover• Unique CPR-function with transport function	<ul style="list-style-type: none">• Type: Dynamic pressure mattress• Height: 21 cm• Function: As an aid in the prevention and treatment of pressure ulcers up to and including category 4⁽¹⁾ and unclassified pressure ulcers/pressure injuries as well as an aid in pain therapy.• Recommended user weight: 0-230 kg• Fire: EN 597-1, -2• Sound level of pump, max: 17 dBA⁽²⁾, 35 dBA⁽⁶⁾• Warranty: 2 years• PVC free• Cleaning of cover: Wipe with cleaning agent and/or disinfectants• Machine wash max 95 °C, tumble drying Chlorine resistant (10%) multi stretch cover
FEATURES PUMP	
<ul style="list-style-type: none">• Fully automated control unit that adapts individually• User friendly interface• Audible and visual notifications• Newly developed pulsating mode• Caring mode (max-firm)• Pack & Go function• Silent running and vibration free• Low voltage (12V power supply)• Soft friction hangers with extra soft tip• Air flow control; Constant temperature, increased user comfort, energy reduction	

CuroCell UNO®

A new generation of fully automated
alternating pressure mattress replacement systems



 care of sweden

SUPPORTING LIFE

CuroCell UNO®

The CuroCell UNO® is used as an aid in the prevention and treatment of pressure injuries up to and including category 4⁽¹⁾. It stands for innovation and modern design and together with quality engineering it lays the foundation for our new generation of fully automated premium mattress systems.

The pump is fully automatic with three programs – Alternating, Pulsating and Constant low pressure. The system identifies the user and manages all settings to optimize the pressure according to the user’s needs. It is equipped with a large touch screen panel with a user friendly interface.

Care of Sweden’s mattresses are supplied with a four way stretch hygienic outer cover which conforms to relevant standards for hygiene⁽³⁾, quality and safety. All covers are manufactured from modern, recyclable materials and are vapour permeable⁽⁴⁾, which reduce the risk of skin maceration.

OPTIONAL

- Durable bag
- Sheet holder

SIZES

80/85/90/105/120 x 200/210/220 x 20 cm
If you need any other sizes please contact Unicare Health

OPTIONAL

(1) National Pressure Ulcer Advisory Panel, European Pressure Ulcer Advisory Panel and Pan Pacific Pressure Injury Alliance. Prevention and Treatment of Pressure Ulcers: Quick Reference Guide. Emily Haesler (Ed.). Cambridge Media: Osborne Park, Western Australia; 2014.
(2): "EN ISO 11201 Acoustics - Noise emitted by machinery and equipment - Determination of emission sound pressure levels", SP 2015.
(3) ISO 16603 "resistance of penetration by blood and body fluids", ISO 16604 "resistance of penetration by blood-borne pathogens", EN 14126.
(4) SS-EN ISO 15496:2004, DIN 53122-1



Always read the instruction for use prior to usage of the product.



Care of Sweden, Optimal 5zon and DuoCore are trademarks of Care of Sweden AB. © Care of Sweden AB, 2016. All Rights Reserved.
Last update: 2018-12-04

FEATURES MATTRESS	FACTS
<ul style="list-style-type: none">• Cell on Cell construction with safety mattress• Heel function• Static head cells• CPR-function for rapid deflation• Smart cable management• PVC free• Unique design for easy handling and usage• Chlorine resistant (10%) multi stretch cover with welded seams• Well protected zipper	<ul style="list-style-type: none">• Type: Alternating pressure mattress replacement system• Height: 20 cm• Function: Prevention and treatment up to and including category 4⁽¹⁾• Recommended user weight: 0-250 kg• Input voltage: 100-240 V / 50-60 Hz• Sound level, pump, max.: 20 dBA⁽²⁾• Warranty: 2 years• Cleaning of cover: Wipe with cleaning agent and/or disinfectants• Machine wash max 95 °C, tumble drying
FEATURES PUMP	
<ul style="list-style-type: none">• Fully automated pump that adapts individually• Large colour touch display with user-friendly interface• Built in instruction manual• 4 modes: Alternating, Pulsating, Static and Max-Firm• Pack & Go Function• Silent running and vibration free• Battery backup (optional)• Soft friction hangers with extra soft tip• Notification function for loss of air and electricity supply	

Notes

[illegible]



Organize your free mattress trial

At Unicare Health, we understand that it is sometimes difficult for you to visit us. We also understand that there is no 'one size fits all' solution when it comes to pressure injury prevention and management.

That is why we offer free, no-obligation, in-home trials to ensure that your selected mattress suits your needs, environment and circumstances.

Call us for a no-obligation free trial today! 1800 656 654



Care of Sweden is exclusively distributed through Unicare Health in Western Australia



Unicare Health

25-29 Alexandra Pl, Bentley
Western Australia 6102

Phone: 1800 656 654
Email: info@unicarehealth.com.au
Web: www.unicarehealth.com.au